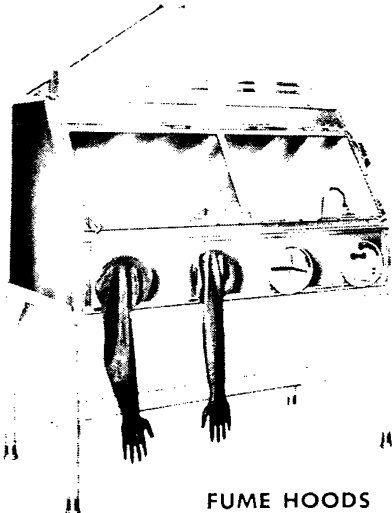


STAINLESS STEEL LABORATORY EQUIPMENT

for work with
RADIOACTIVE MATERIALS
and contaminants
in the biological field

CREVICE-FREE CONSTRUCTION ASSURES EASY CLEANING AND DECONTAMINATION—Blickman equipment is designed for handling radioactive materials, bacteria, viruses and other hazardous substances. Stainless steel, all-welded, seamless round corner construction makes decontamination simple . . . **Send for our booklet**—"A Typical Radio Chemical Laboratory," or for technical bulletins about specific equipment.



FUME HOODS

All stainless steel fume hood for handling hazardous substances. Available with or without stand-in units 4, 5, 6 and 8 ft. long. Round corner, crevice-free construction. Bulletins E-1 and E-3.

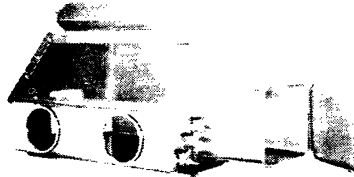


CONTAINERS

Stainless steel receptacles for radioactive waste. Foot lever rotates segment in cover to eliminate air movement and prevent spread of contamination. Bulletin B-2.

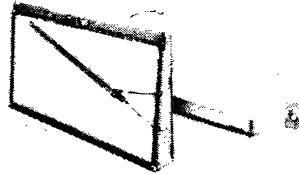
CAGES

Open view of Blickman stainless steel animal cage. Easy to clean, durable, corrosion resistant. Bulletin C-1.



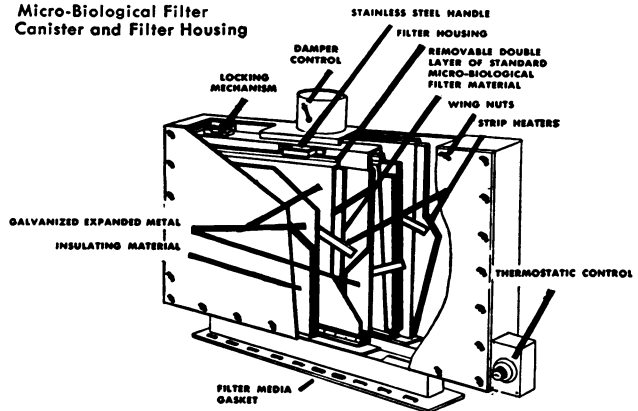
DRY BOXES

Stainless steel low intensity dry box. Rounded corners to facilitate cleaning and decontamination. Available in several sizes. Bulletin A-1.



Micro-Biological FILTER CANISTER

Micro-Biological Filter Canister and Filter Housing



This micro-biological filter canister is designed to filter out and destroy micro-organisms that may be present in exhaust air from experimental and production work done in the enclosures. It can be adapted to existing equipment or new equipment built for the laboratory, such as hoods, dry boxes and enclosures. These include various types used in biological and pharmaceutical research or production.



Blickman-Built
STAINLESS STEEL
LABORATORY EQUIPMENT

FUME HOODS
DRY BOXES
ANIMAL CAGES
PROCESS UNITS
PEG BOARDS

SEMI-HOT FUME HOODS
LABORATORY TABLES
DRY WASTE CONTAINERS
LIQUID WASTE CONTAINERS
LABORATORY STOOLS
STAINLESS STEEL SINK UNITS

ENCLOSURES
SHELVING
CABINETS
CASEWORK
TRAYS

S. BLICKMAN, INC. 6105 Gregory Avenue, Weehawken, N. J.



Diagnostic Reagents for the Determination of

ANTISTREPTOLYSIN TITERS

Bacto-Streptolysin O Reagent is a standardized reagent recommended as an aid in the diagnosis of Rheumatic Fever, Glomerulonephritis and other diseases associated with Group A streptococcal infections.

SENSITIVITY TESTS

The significance of determining bacterial sensitivity is accentuated by the discovery of increasing numbers of antibiotics, sulfonamides, and other chemo-therapeutic agents and the development of resistant organisms to one or more of these compounds. Sensitivity or resistance is easily determined with *Bacto-Sensitivity Disks*.

HETEROPHILE ANTIBODIES

The differential diagnosis of Infectious Mononucleosis requires the use of standardized heterophile reagents:

Bacto-Guinea Pig Kidney Antigen, Desiccated and Suspension
Bacto-Beef Cell Antigen, Desiccated and Suspension

BLOOD COAGULATION

Prothrombin determinations require accurately prepared interstandardized reagents:

Bacto-Thromboplastin	Bacto-AC Globulin
Bacto-Prothrombin 2 Stage Reagent	Bacto-Sodium Chloride 0.85 Per Cent
Bacto-Prothrombin Free Beef Plasma	Bacto-Sodium Oxalate Solution 0.1 Molar
Bacto-Prothrombin Free Rabbit Plasma	Bacto-Calcium Chloride Solution 0.02 Molar

LIVER DISEASE

Differential diagnosis of hepatic disturbances is aided by standardized reagents:

Bacto-Cephalin Cholesterol Antigen
Bacto-Thymol Turbidity Reagent **Bacto-Kingsbury Turbidity Standards**
Bacto-Thromboplastin and other Prothrombin Reagents

RENAL FUNCTION

Phenolsulfonphthalein Ampules, Difco is a carefully prepared injectable recommended for use in determining renal excretion rate.

HEMAGGLUTINATION OF RED BLOOD CELLS

Accurately determined by the use of:

Bacto-Trypsin 1% for Hemagglutination	Trypsin, Difco, 1:250
Bacto-Hemagglutination Buffer	Bacto-Bovine Albumin 30%
Bacto-Phytohemagglutinin	

DIFCO LABORATORIES

DETROIT 1, MICHIGAN