

Ecological Genomics of Marine Roseobacters^{∇†}

M. A. Moran,^{1*} R. Belas,² M. A. Schell,³ J. M. González,⁴ F. Sun,¹ S. Sun,¹ B. J. Binder,¹
 J. Edmonds,¹ W. Ye,¹ B. Orcutt,¹ E. C. Howard,³ C. Meile,¹ W. Palefsky,⁵ A. Goesmann,⁶
 Q. Ren,⁷ I. Paulsen,⁷ L. E. Ulrich,⁸ L. S. Thompson,⁹
 E. Saunders,⁹ and A. Buchan¹⁰

Department of Marine Sciences, University of Georgia, Athens, Georgia 30602¹; Center of Marine Biotechnology, University of Maryland Biotechnology Institute, 701 East Pratt St., Baltimore, Maryland 21202²; Department of Microbiology, University of Georgia, Athens, Georgia 30602³; Department of Microbiology, University of La Laguna, 38071 La Laguna, Tenerife, Spain⁴; Institute of Ecology, University of Georgia, Athens, Georgia 30602⁵; Center for Biotechnology, Bielefeld University, D-33594 Bielefeld, Germany⁶; The Institute for Genomic Research, 9712 Medical Center Drive, Rockville, Maryland 20850⁷; Joint Institute for Computational Sciences, The University of Tennessee-Oak Ridge National Laboratory, Oak Ridge, Tennessee 37831-6173⁸; Bioscience Division and DOE Joint Genome Institute, Los Alamos National Laboratory, Los Alamos, New Mexico 87545⁹; and Department of Microbiology, University of Tennessee, Knoxville, Tennessee 37996-0845¹⁰

Received 6 November 2006/Accepted 17 May 2007

Bacterioplankton of the marine *Roseobacter* clade have genomes that reflect a dynamic environment and diverse interactions with marine plankton. Comparative genome sequence analysis of three cultured representatives suggests that cellular requirements for nitrogen are largely provided by regenerated ammonium and organic compounds (polyamines, allophanate, and urea), while typical sources of carbon include amino acids, glyoxylate, and aromatic metabolites. An unexpectedly large number of genes are predicted to encode proteins involved in the production, degradation, and efflux of toxins and metabolites. A mechanism likely involved in cell-to-cell DNA or protein transfer was also discovered: *vir*-related genes encoding a type IV secretion system typical of bacterial pathogens. These suggest a potential for interacting with neighboring cells and impacting the routing of organic matter into the microbial loop. Genes shared among the three roseobacters and also common in nine draft *Roseobacter* genomes include those for carbon monoxide oxidation, dimethylsulfoniopropionate demethylation, and aromatic compound degradation. Genes shared with other cultured marine bacteria include those for utilizing sodium gradients, transport and metabolism of sulfate, and osmoregulation.

In surface waters of the open ocean, 1 in 10 bacterial cells is a member of the *Roseobacter* group (17). In coastal waters, the number of *Roseobacter* cells increases to 1 in 5 (11, 19). Despite their obvious ecological success, however, roseobacters do not fit the stereotype of a small, metabolically conservative, “oligotrophic” bacterium (8, 18). Instead, they are large (0.08 μm^3) (38), easily cultured (19), and respond readily to increased substrate availability (7). Analysis of the first *Roseobacter* genome sequence, that of *Silicibacter pomeroyi*, revealed a fairly large genome (4.5 Mb) housing abundant and diverse transporters, complex regulatory systems, and multiple pathways for acquiring carbon and energy in seawater. Roseobacters thus appear to be quite versatile from metabolic and ecological standpoints (43), with an assortment of strategies for obtaining carbon and nutrients and, directly or indirectly, affecting the biogeochemical status of seawater.

The availability of two additional closed genome sequences of cultured roseobacters provides the opportunity for an ecologically based analysis of the genetic capabilities of this bacterial taxon. The three organisms are assumed to have different niches in the surface ocean based on the conditions of their

isolation: *S. pomeroyi* is a free-living heterotrophic bacterioplankton obtained from coastal seawater (43), congener *Silicibacter* sp. strain TM1040 (96% 16S rRNA sequence identity to *S. pomeroyi* [Fig. 1]) is an associate of the marine dinoflagellate *Pfiesteria piscicida* (1, 40), and *Jannaschia* sp. strain CCS1 (with 94% 16S rRNA sequence identity to the two *Silicibacter* species) represents a recently discovered class of marine aerobic bacteriochlorophyll *a*-based phototrophs (4). Our comparative analysis of the three *Roseobacter* genomes centered on three questions. (i) What physiological and ecological traits of roseobacters can be inferred from the genome sequences (focusing on genes that define ecological strategies and biogeochemical roles)? (ii) What makes a roseobacter a roseobacter (focusing on genes shared among the species)? (iii) What makes a roseobacter marine (focusing on genes shared with other cultured marine bacteria from phylogenetically distant taxa)?

MATERIALS AND METHODS

Organisms. *Silicibacter pomeroyi* strain DSS-3 was isolated from Atlantic coastal seawater (Georgia; salinity = 31) in 1999 on a minimal seawater medium enriched with 10 μM dimethylsulfoniopropionate (DMSP). *Silicibacter* sp. strain TM1040 was isolated from a marine dinoflagellate culture (*Pfiesteria piscicida*) in 2000 on 0.5 \times Marine agar 2216. *Jannaschia* sp. strain CCS1 was isolated from Pacific coastal seawater (Bodega Head, CA; salinity = 33) in 2003 on 1/10-strength YTSS agar (full strength YTSS is 0.4% yeast extract plus 0.25% tryptone made with 20 g liter⁻¹ sea salts).

Genomic sequencing and annotation. *Silicibacter* sp. strain TM1040 and *Jannaschia* sp. strain CCS1 were sequenced by the random shotgun method (see

* Corresponding author. Mailing address: Department of Marine Science, University of Georgia, Athens, GA 30602. Phone: (706) 542-6481. Fax: (706) 542-5888. E-mail: mmoran@uga.edu.

† Supplemental material for this article may be found at <http://aem.asm.org/>.

[∇] Published ahead of print on 25 May 2007.

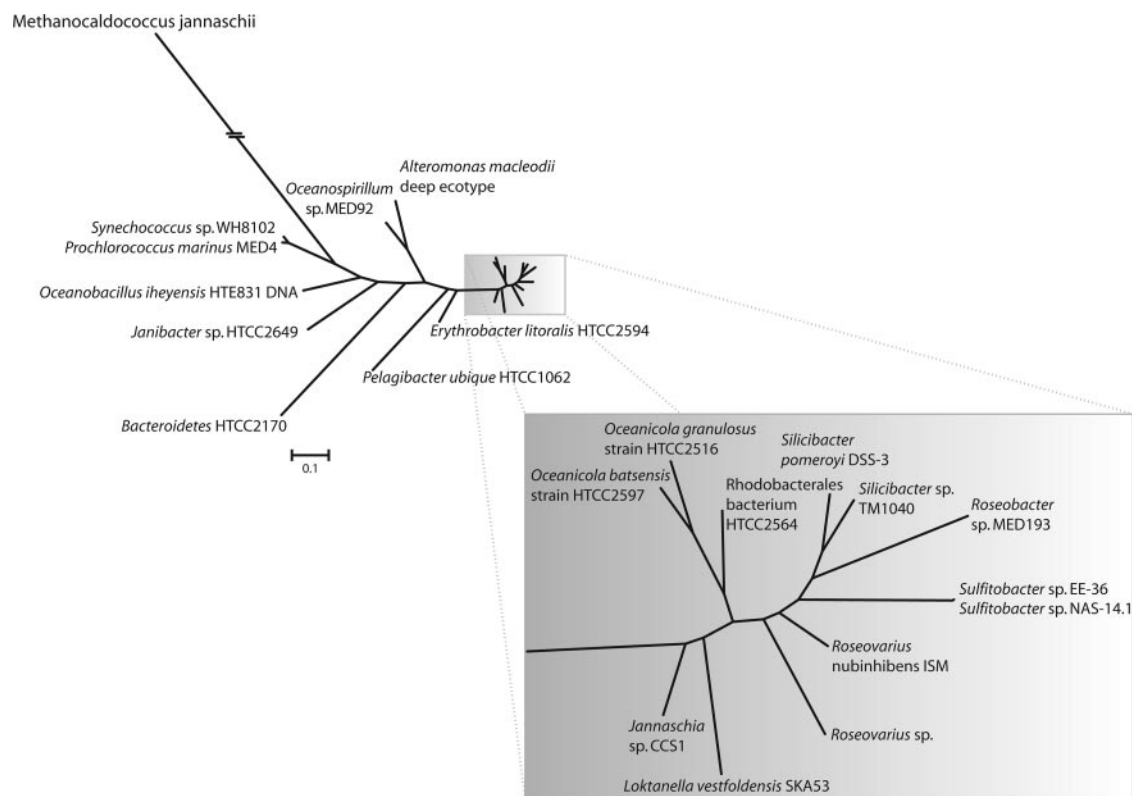


FIG. 1. Phylogenetic tree of 16S rRNA gene sequences from 12 roseobacters and other selected marine bacterioplankton for which a genome sequence is available. The tree is based on positions 21 to 1490 of the 16S rRNA gene (*E. coli* numbering system). The tree was constructed with the PAUP* package (53), version 4.10b, using the maximum likelihood method. The bar corresponds to the number of changes per nucleotide for the main tree.

www.jgi.doe.gov for details of library construction and sequencing). Large, medium, and small insert random libraries (38 kb, 9.5 kb, and 3 kb for *Silicibacter* sp. strain TM1040; 38 kb, 13 kb, and 5.6 kb for *Jannaschia* sp. strain CCS1) were sequenced with an average success rate of 96% and an average high-quality read length of 685 nucleotides. Reads were assembled with parallel Phrap (High Performance Software, LLC), and possible misassemblies were corrected with Dupfinisher (22) or a transposon bomb of bridging clones (Epicentre Biotechnologies, Madison, WI). Gaps between contigs were closed by editing, custom primer walking, or PCR amplification. The completed genome sequence of *Silicibacter* sp. strain TM1040 contains 59,153 reads, achieving an average of 13-fold sequence coverage per base. The completed genome sequence of *Jannaschia* sp. strain CCS1 contains 67,683 reads, achieving an average of 14-fold sequence coverage per base. The error rate was <1 in 100,000. Sequencing and annotation of *S. pomeroyi* DSS-3 are described by Moran et al. (43).

Sequence analysis and annotation. The *Silicibacter* sp. strain TM1040 and *Jannaschia* sp. strain CCS1 genomes were annotated with the GenDB system (39).

Synteny analysis. Comparative genetic arrangements were analyzed by the Artemis Comparison Tool (50). Files were prepared using separate one-way tBLASTx analysis of chromosomes, megaplasmids, and plasmids with cutoffs of >45% identity and scores of >35.

Signal transduction analysis. Signal transduction proteins were identified by searching against the Pfam (3) and SMART (35) domain databases and filtering for proteins that contained domains implicated in signal transduction (55). Transmembrane regions were predicted using Phobius (27). Cultured marine bacteria used in comparisons were *Cellulophaga* sp. strain MED134, *Croceibacter atlanticus* HTCC2559, *Flavobacterium* sp. strain MED217, *Polaribacter irgensii* 23-P, *Robiginitalia biformata* HTCC2501, *Tenacibaculum* sp. strain MED152, *Cytophaga hutchinsonii*, *Crocospaera watsonii* WH8501, *Synechococcus* sp. strain WH8102, *Prochlorococcus marinus* MIT9313, *Bacillus* sp. strain NRRL B-14911, *Oceanobacillus iheyensis* HTE831, *Rhodopirellula* sp. strain 1, *Pelagibacter ubique* HTCC1062, *Erythrobacter litoralis* HTCC2594, *Erythrobacter* sp. strain NAP1, *Nitrospira* sp. strain Nb-311A, *Oceanicaulis alexandrii* HTCC2633, *Parvularcula*

bermudensis HTCC2503, *Sphingopyxis alaskensis* RB2256, *Alteromonas macleodii*, *Colwellia psychrerythraea* 34H, *Idiomarina baltica* OS145, *Idiomarina loihiensis* L2TR, *Marinobacter aquaeolei* VT8, *Marinomonas* sp. strain MED121, *Nitrosococcus oceanii* ATCC 19707, *Oceanospirillum* sp. strain MED92, *Photobacterium profundum* SS9, *Photobacterium* sp. strain SKA34, *Pseudoalteromonas atlantica* T6c, *Pseudoalteromonas haloplanktis* TAC125, *Shewanella baltica* OS155, *Shewanella frigidimarina* NCIMB 400, *Vibrio fischeri* ES114, *Vibrio splendidus* 12B01, and *Magnetococcus* sp. strain MC-1. *Alphaproteobacteria* used in comparisons were *Agrobacterium tumefaciens* C58 UWash, *Caulobacter crescentus* CB15, *Mesorhizobium loti* MAFF303099, *Mesorhizobium* sp. strain BNC1, *Paracoccus denitrificans* PD1222, *Rhodobacter sphaeroides* 2.4.1, *Rhodopseudomonas palustris* BisB18, and *Sinorhizobium meliloti* 1021.

Transporter profiles and ANOSIM analysis. Complete predicted protein sequences were searched against a curated set of proteins with family assignment for similarity to known or putative transporter proteins and against a nonredundant general protein database using a semiautomated pipeline (48). Manual annotation for final assignments was based on the number of hits to the transporter database, maximum, minimum, and average BLAST E values, the description of top hits to the general protein database, and cluster of orthologous group (COG) assignments. The roseobacters were compared to a selected group of bacteria for which similar transporter analysis was available, consisting of six closely related nonmarine alphaproteobacteria (*A. tumefaciens* C58 UWash, *C. crescentus* CB15, *R. palustris* CGA009, *M. loti* MAFF303099, *R. sphaeroides* 2.4.1, and *S. meliloti* 1021) and seven marine heterotrophic bacteria (*Vibrio vulnificus* CMCP6, *Desulfotalea psychrophila* LSV54, *Oceanobacillus iheyensis* HTE831, *Rhodopirellula* sp. strain 1, *Colwellia psychrerythraea* 34H, *Photobacterium profundum* SS9, and *Idiomarina loihiensis* L2TR). Using the 70 transporter families that had ≥ 2 occurrences in at least one genome, a Bray-Curtis similarity matrix was created. A one-way analysis of similarity (ANOSIM) (15) was used to test for significant differences in transporter composition among the three groups defined a priori. Differences among groups were visualized using nonmetric multidimensional scaling of the similarity matrix (PRIMER 5 software) (15).

Identification of shared and unique genes. Genes shared among the three *Roseobacter* strains were identified by three-way reciprocal best hit (RBH) analysis using BLAST thresholds of $E < 10^{-5}$ and amino acid identity of $>30\%$. Core genes in the 12 total *Roseobacter* genome sequences were identified by sequential two-way RBH analysis, beginning with the *S. pomeroyi* genome and adding the other 11 genomes one at a time. Core genes were defined as those found in all 12 genomes based on RBH to *S. pomeroyi* genes. As each genome was sequentially added to the analysis, the total gene count was incremented if a gene had no RBH in any previous genome. Both the core gene count and total gene count are likely to be underestimated with this approach because nine of the genomes are draft. A second approach, the in silico genomic subtraction (ISGS) method (16), was also used because the RBH method misses orthologs if open reading frames (ORFs) are overlooked or miscalled. This method is based on sequential subtractions of ORFs based on one-way BLASTp and tBLASTn analysis. *S. pomeroyi* genes were blasted sequentially against the genomes of nonmarine alphaproteobacterial relatives *R. sphaeroides* 2.4.2, *P. denitrificans* PD1222, *S. melloti* 1021, and *M. loti* MAFF303099, and orthologous genes were removed from the data set. The remaining ORFs were compared by tBLASTn to the genome sequences of *Silicibacter* sp. strain TM1040 and *Jannaschia* sp. strain CCS1 to obtain a final ISGS unique gene set consisting of 121 ORFs shared by all three roseobacters but missing from the four nonmarine alphaproteobacterial genomes. The final composition of this gene set is affected by the bioinformatic decision of which alphaproteobacterial relatives to use in the subtraction but consists largely of genes more typical of roseobacters than their alphaproteobacterial relatives.

Identification of genes with a marine signal. We determined whether orthologs of *Roseobacter* genes were found more commonly in marine than in nonmarine genomes. Twenty pairs of non-*Roseobacter* genomes were assembled, each consisting of the genome of a marine isolate (most from surface seawater) paired with its closest nonmarine relative at the time of the analysis: *Synechococcus* sp. strain WH8102 and *Synechococcus elongatus* PCC 7942, *Rhodospirillum baltica* SH 1 and *Moorella thermoacetica* ATCC 39073, *P. ubique* HTCC1062 and *Wolbachia* sp. strain TRS, *P. marinus* MIT9313 and *Gloeobacter violaceus* PCC 7421, *Pseudoalteromonas haloplanktis* TAC125 and *Legionella pneumophila*, *Shewanella frigidimarina* NCIMB 400 and *Shewanella putrefaciens* CN-32, *Magnetococcus* sp. strain MC-1 and *Rhodospirillum rubrum*, *Sphingomonas alaskensis* and *Zymomonas mobilis* ZM4, *Erythrobacter litoralis* HTCC2594 and *Novosphingobium aromaticivorans* F199, *Flavobacterium* sp. strain MED217 and *Bacteroides fragilis* ATCC 25285, *C. atlanticus* HTCC2559 and *Porphyromonas gingivalis* W83, *V. splendidus* 12B01 and *Escherichia coli* K-12, *I. baltica* OS145 and *Pseudomonas putida* KT2440, *Janibacter* sp. strain HTCC2649 and *Arthrobacter* sp. strain FB24, *Parularcula bermudensis* HTCC2503 and *Brucella abortus* 9-941, *Bacillus* sp. strain NRRL B-14911 and *Bacillus halodurans* C-125, *Marinomonas* sp. strain MED121 and *Pseudomonas syringae* B728a, *Nitrosococcus oceani* ATCC 19707 and *Pseudomonas fluorescens* Pf0-1, *Oceanicola alexandrii* HTCC2633 and *R. sphaeroides* 2.4.2, and *Nitrobacter* sp. strain Nb311A and *R. palustris* BisB18. Orthologs to *Roseobacter* genes were identified in these genomes with BLASTp analysis and using the criteria of RBH, an E value of $\leq 10^{-5}$, and a percent identity of $\geq 30\%$. Whether the observed gene distribution was different from expected (the null hypothesis being that the gene occurred in an equal number of marine and nonmarine genomes) was estimated by computing a chi-square statistic and associated P value.

Nucleotide sequence accession numbers. The complete *Silicibacter* sp. strain TM1040 and *Jannaschia* sp. strain CCS1 genome sequences are available under GenBank accession no. NC_008043 and NC_007802. The complete *Silicibacter pomeroyi* DSS-3 sequence was previously deposited under GenBank accession number NC_003911. Nine draft *Roseobacter* genomes available for comparison at the time of analysis were *Lokanella vestfoldensis* SKA53 (AAMS00000000), *Roseovarius* sp. strain 217 (AAMV000000000), *Roseobacter* sp. strain MED193 (AANB000000000), *Sulfobacter* sp. strain EE-36 (AALV000000000), *Roseovarius nubinhibens* ISM (AALY000000000), *Sulfobacter* sp. strain NAS-14.1 (AALZ000000000), *Oceanicola batsensis* HTCC2597 (AAMO000000000), *Oceanicola granulosa* HTCC2516 (AAOT000000000), and *Rhodobacterales bacterium* HTCC2654 (AAMT000000000).

RESULTS AND DISCUSSION

General genome organization and content. All three *Roseobacter* genomes contain ~4,000 genes (Table 1), but there is considerable variability in genome organization and content (see Fig. S1 in the supplemental material). *S. pomeroyi* DSS-3

TABLE 1. Features of three *Roseobacter* genomes

| Feature | Result for ^a : | | |
|-------------------------------------|-----------------------------|---|---|
| | <i>S. pomeroyi</i> DSS-3 | <i>Silicibacter</i> sp. strain TM1040 | <i>Jannaschia</i> sp. strain CCS1 |
| Total no. of coding sequences | 4,283 | 3,863 | 4,283 |
| G+C content (%) | 64.0 | 60.0 | 62.2 |
| No. of rRNA operons | 3 | 5 | 1 |
| No. of replicons | 2 | 3 | 2 |
| Molecule length by replicon (bp) | | | |
| Main chromosome | 4,109,442 | 3,201,640 | 4,317,977 |
| Megaplasmid | 491,611 | 823,032 | NA |
| Plasmid | NA | 131,885 | 86,072 |
| No. of coding sequences by replicon | | | |
| Main chromosome | 3,838 | 3,013 | 4,212 |
| Megaplasmid | 445 | 747 | NA |
| Plasmid | NA | 103 | 71 |
| G+C content by replicon (%) | | | |
| Main chromosome | 64.2 | 60.4 | 62.3 |
| Megaplasmid | 62.8 | 59.3 | NA |
| Plasmid | NA | 55.3 | 57.8 |
| No. of rRNA operons by replicon | | | |
| Main chromosome | 3 | 1 | 1 |
| Megaplasmid | 0 | 3 | NA |
| Plasmid | NA | 1 | 0 |

^a NA, not applicable.

has a 491-kb megaplasmid (pSPD1), *Jannaschia* sp. strain CCS1 has an 80-kb plasmid (pJCS1), and *Silicibacter* sp. strain TM1040 has both an 823-kb megaplasmid (pSTM1) and a 131-kb plasmid (pSTM2). Neither the *S. pomeroyi* nor *Jannaschia* sp. strain CCS1 plasmids have rRNA operons, but the two plasmids of *Silicibacter* sp. strain TM1040 together harbor four of its five rRNA operons (Table 1). Designation of pSTM1 and pSTM2 as plasmids rather than chromosomes is based on the finding that none of 11 single-copy genes essential for bacterial growth (51) is found on either and that each contains a plasmid-type replication origin (*rep* and *parAB*) (12). The relatively small plasmids of *Silicibacter* sp. strain TM1040 and *Jannaschia* sp. strain CCS1 (pSTM2 and pJCS1) do not appear closely related, and only nine genes are similar (including *rep*, *parAB*, several genes involved in sugar or polysaccharide metabolism, and a gene coding for a single ABC transporter-like protein). A plasmid from an uncharacterized *Roseobacter* isolate (149-kb pSD25) (57) likewise has only 15 genes related to those of pSTM2 and three related to those of pJCS1, suggesting the presence of a pool of diverse *Roseobacter* genes harbored on small (~100- to 150-kb) plasmids (see Fig. S1 in the supplemental material).

Each genome contains a number of genes that have no orthologs in the other two; these account for 31% of the *S. pomeroyi* DSS-3 genome, 27% of the *Silicibacter* sp. strain TM1040 genome, and 39% of the *Jannaschia* sp. strain CCS1 genome (Table 2). No prophages are found in the *S. pomeroyi* or *Jannaschia* sp. strain CCS1 genomes, but four are present in the *Silicibacter* sp. strain TM1040 genome (see Table S1 in the supplemental material). Three of these can be experimentally

TABLE 2. Numbers and percentages of shared and unique genes in three *Roseobacter* genomes

| Method | No. (%) of genes that are: | | | |
|---------------|----------------------------|------------------------------------|---|---|
| | Shared 3 ways ^a | Unique to <i>S. pomeroyi</i> DSS-3 | Unique to <i>Silicibacter</i> sp. strain TM1040 | Unique to <i>Jannaschia</i> sp. strain CCS1 |
| RBH analysis | 1,939 | 1,336 (31) | 1,027 (27) | 1,685 (39) |
| ISGS analysis | 121 | 1,260 (29) | 983 (25) | 1,600 (37) |

^a Genes shared three ways are those with orthologs in all three genomes. RBH analysis used the criterion of RBH between pairs of genomes with a corresponding BLAST E value of $<10^{-5}$ and amino acid identity of $>30\%$. ISGS analysis used one-way BLASTp and tBLASTn analysis to identify genes shared by the three *roseobacters* but missing from four nonmarine alphaproteobacterial relatives (*R. sphaeroides*, *P. denitrificans*, *S. meliloti*, and *M. loti*).

induced by mitomycin C treatment (9), and the fourth lacks required structural proteins and may be defective. Variable and dynamic genome organization seems to be the rule for the *Roseobacter* lineage (46).

Inferred ecology and physiology. Because of the numerical and ecological importance of marine *roseobacters* in surface ocean bacterioplankton communities, our annotation efforts paid greatest attention to genes of biogeochemical interest.

(i) Interfacing with the environment. Genes encoding signal transduction proteins comprise approximately 7% of the *Roseobacter* genomes, similar to the average for a marine comparison group ($6.3\% \pm 2.7\%$) and a nonmarine alphaproteobacterial comparison group ($8.1\% \pm 0.9\%$) [Fig. 2]. Two-

component systems constitute a low percentage ($<20\%$) of the overall signal transduction machinery in these *Roseobacter* species. Consequently, the cells respond to environmental stimuli predominantly via one-component systems that account for 86% (302 out of 353) of the signaling proteins in the *S. pomeroyi* genome and slightly lower percentages in the *Silicibacter* sp. strain TM1040 (70%) and *Jannaschia* sp. strain CCS1 (80%) genomes. The *Roseobacter* genomes contain a particularly high number of AsnC/Lrp regulatory proteins, at >3 times the average for the marine comparison group (for which genome sizes are comparable [Fig. 2]). This suggests that amino acid metabolism is particularly important and closely regulated in *roseobacters*; indeed several of the AsnC/Lrp regulators are located adjacent to amino acid transporters or amino acid metabolism-related genes. The *roseobacters* also have a larger number of other one-component systems relative to other cultured marine bacteria, including GntR, IclR, MarR, and TetR-like repressors. Generally, the *Roseobacter* signal transduction profiles are more similar to those of their closest (and nonmarine) alphaproteobacterial relatives than to marine bacteria (Fig. 2).

One-component signal transduction systems with BLUF domains sense blue light based on a conformational change following photon absorption (26). Homologs are found in the genomes of *Silicibacter* sp. strain TM1040 (TM1040_2025 and TM1040_2027) and *Jannaschia* sp. strain CCS1 (Jann_2030, Jann_2780, and Jann_3321), but not *S. pomeroyi*. A two-component bacterial phytochrome system that may be involved in

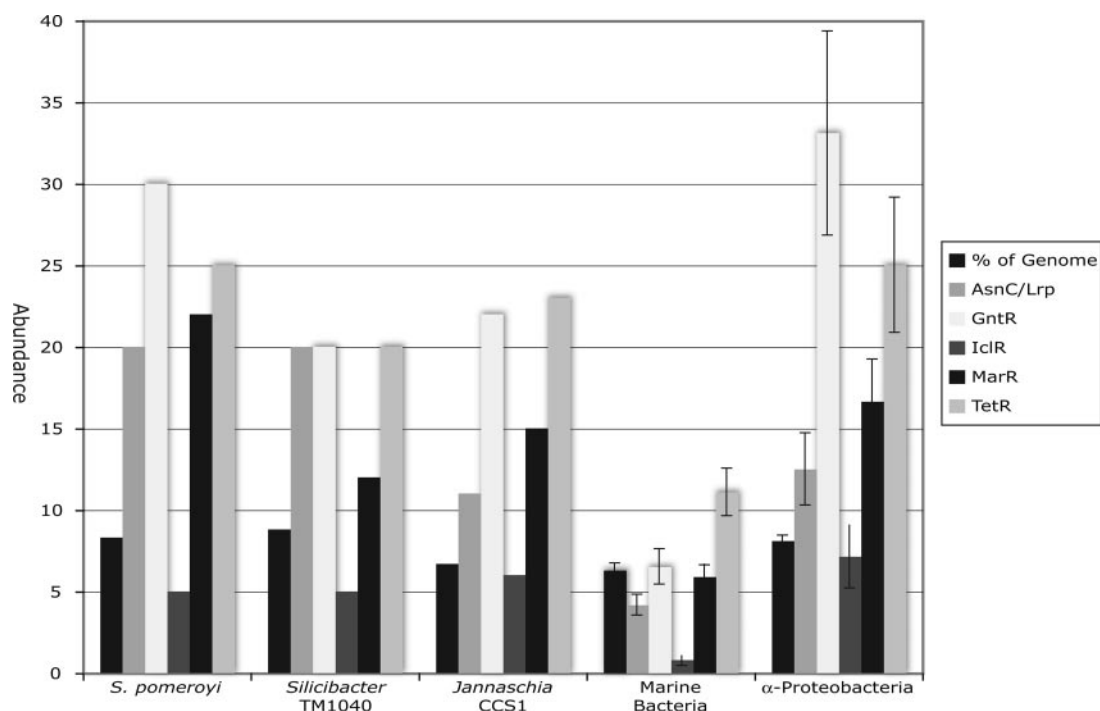


FIG. 2. Signal transduction proteins in three *Roseobacter* genomes and two comparison groups consisting of marine bacterioplankton or closely related nonmarine *Alphaproteobacteria*. The abundance of genes encoding signal transduction proteins are shown as percentages of total coding sequences (% of genome) or as numbers of the one-component systems AsnC/Lrp (likely involved in amino acid metabolism), GntR (repression of gluconate utilization), IclR (repression of the acetate operon), MarR (repression of antibiotic resistance or stress response), and TetR (repression of tetracycline resistance). The marine comparison group consists of 37 genomes with an average size of 4.0 Mb, while the nonmarine alphaproteobacterial comparison group consists of 8 genomes with an average size of 5.5 Mb.

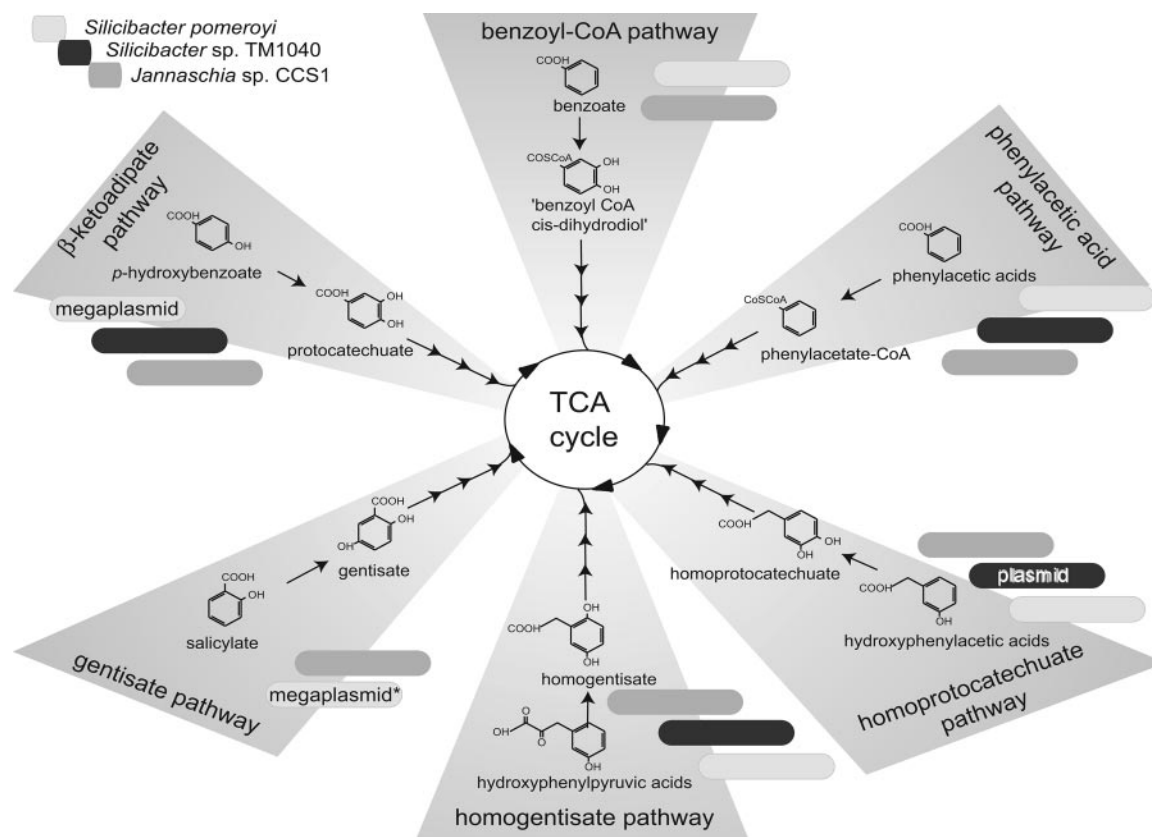


FIG. 3. Six distinct ring-cleaving pathways present in three *Roseobacter* genomes. Shaded tabs indicate the presence of a pathway (light gray, *S. pomeroyi*; dark gray, *Silicibacter* sp. strain TM1040; medium gray, *Jannaschia* sp. strain CCS1). The gene(s) encoding the ring-cleaving enzymes is chromosomally located unless otherwise indicated within the tab. *, *S. pomeroyi* contains two copies of the gentisate pathway: one on the chromosome and one on megaplasmid pSPD. The arrowheads leading into the TCA cycle indicate multiple steps. CoA, coenzyme A.

detection of red and far-red light is also found in *Silicibacter* sp. strain TM1040 (TM1040_2684). The presence of systems for sensing ambient light is noteworthy in a taxon largely restricted to surface waters and may allow light sensing for phototrophy (in *Jannaschia* sp. strain CCS1), protective pigment formation (47), or synchronization of activity with that of photosynthetic plankton. Genomes of many other marine heterotrophs representing diverse taxa (but few nonmarine heterotrophs) likewise were found to contain proteins with BLUF domains, including other roseobacters (*Sulfitobacter* sp. strain NAS-14.1, *Sulfitobacter* sp. strain EE-36, *Roseobacter* sp. strain MED193, and *Roseovarius* sp. strain 217), other alphaproteobacteria (*Sphingopyxis alaskensis* SKA58), gammaproteobacteria (*Alteromonas macleodii* "deep ecotype," *Pseudoalteromonas tunicata*, *Marinomonas* sp. strain MED121, *Oceanospirillum* sp. strain MED92, *Reinekea* sp. strain MED297, *Vibrio* sp. strain MED222, and *V. splendidus* 12B01), and bacteroidetes (*Psychroflexus torquis* and *Tenacibaculum* sp. strain MED152).

Swimming motility and chemotaxis behavior determine the ability of *Roseobacter* cells to position themselves in a heterogeneous environment. Motility has been demonstrated experimentally in the three strains, and flagellar structural genes were indeed found for all (see Table S2 in the supplemental material). *Silicibacter* sp. strain TM1040 has six copies of the flagellar filament gene *fljC* compared to just one for *S.*

pomeroyi and *Jannaschia* sp. strain CCS1. Chemotaxis receptors (methyl-accepting chemotaxis proteins [MCPs]) and signal transducers (*che* gene orthologs) are abundant in *Silicibacter* sp. strain TM1040 and *Jannaschia* sp. strain CCS1 but surprisingly are completely lacking in *S. pomeroyi* (43) (see Table S3 in the supplemental material). Twenty MCPs are available to bind chemical attractants or repellants in the membrane or cytoplasm of *Silicibacter* sp. strain TM1040, and 14 cytoplasmic chemotaxis signal transducers receive signals from these MCPs to control changes in swimming direction. *Jannaschia* sp. strain CCS1 has four MCPs and eight signal transducers. Initial clues about which compounds stimulate chemotaxis in roseobacters have emerged from experimental studies of *Silicibacter* sp. strain TM1040: positive chemotactic responses are induced by amino acids, dinoflagellate cell homogenates, the algal osmolyte DMSP, and DMSP breakdown products (41).

ABC-type transporters average 95 per genome for the three roseobacters compared to 150 for an alphaproteobacterial comparison group and 66 for a marine heterotroph group; major facilitator superfamily (MFS) transporters average 22 per genome for roseobacters compared to 39 for alphaproteobacteria and 19 for marine heterotrophs. The set of *Roseobacter* transporter genes is not statistically different from either comparison group, although alphaproteobacteria and marine heterotrophs differ from each other (ANOSIM; $P =$

TABLE 3. Survey of biogeochemically relevant genes in three complete and nine draft *Roseobacter* genomes^a

| Genome or parameter | Result for: | | | | | | | | | | |
|--|-------------|------------------|--------------|-------------|-------------|----------------------------|----------------------------|----------------------------|------------------|-------------|--|
| | AAnP genes | <i>cox</i> genes | <i>pcaGH</i> | <i>boxC</i> | <i>soxB</i> | <i>nirS/K</i> | <i>nasA</i> | <i>phn</i> genes | <i>vir</i> genes | <i>dmdA</i> | |
| Genomes | | | | | | | | | | | |
| Complete | | | | | | | | | | | |
| <i>Silicibacter pomeroyi</i> DSS-3 | | + | + | + | + | + | | + | | + | |
| <i>Silicibacter</i> sp. strain TM1040 | | + | + | | | | | + | + | + | |
| <i>Jannaschia</i> sp. strain CCS1 | + | + | + | + | | | + | | | + | |
| Draft | | | | | | | | | | | |
| <i>Sulfitobacter</i> sp. strain EE-36 | | + | + | | + | | + | + | | | |
| <i>Sulfitobacter</i> sp. strain NAS-14.1 | | + | + | | + | | + | + | | | |
| <i>Roseovarius nubinhibens</i> ISM | | | + | | + | | | + | + | + | |
| <i>Roseovarius</i> sp. strain 217 | + | + | + | | + | + | + | + | + | + | |
| <i>Oceanicola batsensis</i> HTCC2597 | | + | + | | | | | + | + | | |
| <i>Oceanicola granulosus</i> HTCC2516 | | + | | | | | | | + | | |
| <i>Rhodobacteriales</i> bacterium HTCC2654 | | + | | + | + | + | + | + | + | | |
| <i>Loktanella vestfoldensis</i> SKA53 | + | + | + | | | | | + | + | | |
| <i>Roseobacter</i> sp. strain MED193 | | + | + | | + | | + | + | + | + | |
| Parameters | | | | | | | | | | | |
| % of <i>Roseobacter</i> genomes | 25 | 92 | 83 | 25 | 58 | 25 | 50 | 92 | 50 | 50 | |
| Experimental evidence (reference) | ND | Yes (43) | Yes (5) | ND | Yes (21) | Yes (Fig. S7) ^b | Yes (Fig. S4) ^b | Yes (Fig. S5) ^b | ND | Yes (24) | |
| Ortholog in <i>P. ubique</i> HTCC1062 | No | No | No | No | No | No | No | No | No | Yes | |

^a The nine draft *Roseobacter* genomes include those for aerobic anoxygenic phototrophy (AAnP genes), carbon monoxide oxidation (*cox* genes), aromatic compound degradation (*pcaGH* and *boxC*), sulfur oxidation (*soxB*), denitrification (*nirS/K*), nitrate assimilation (*nasA*), phosphonate use (*phn* genes), type IV secretion (*vir* genes), and DMSP demethylase (*dmdA*). + indicates the presence of a homolog with an E value of $\leq 10^{-40}$ and amino acid percent sequence identity of $\geq 40\%$. Phenotypes that have been demonstrated experimentally for a *Roseobacter* strain are indicated by "yes." ND, not determined. The presence of an ortholog in the genome of SAR11 member *P. ubique* is indicated.

^b See the supplemental material.

0.008; and see Fig. S2 in the supplemental material). Two particular transporter families are more abundant in roseobacters than in either comparison group, however: tripartite ATP-independent periplasmic (TRAP) transporters often associated with uptake of dicarboxylic acids and sugars (averaging 22 genes per genome compared to only 7 for alphaproteobacteria and 6 for marine heterotrophs), and the drug/metabolite (DMT) superfamily involved in cellular export of toxins and metabolites (averaging 30 genes per genome compared to 16 for alphaproteobacteria and 14 for marine heterotrophs). Both of these families use ion gradients instead of ATP to drive substrate uptake, which may be beneficial given the external salt concentrations roseobacters experience. If so, not all marine heterotrophs utilize this transport strategy.

(ii) Acquiring carbon and energy. The *Roseobacter* genomes reveal a surprising number of pathways for catabolism of structurally diverse aromatic substrates. A pathway for the degradation of protocatechuate was identified previously in members of the *Roseobacter* clade (6). Now, five other distinct pathways representing both oxygenase-dependent and -independent ring-cleaving mechanisms have been found. These encode the aerobic degradation of the aromatic intermediates gentisate, homoprotocatechuate, homogentisate, benzoate, and phenylacetate. *S. pomeroyi* DSS-3 and *Jannaschia* sp. strain CCS1 possess genes for all six pathways; *Silicibacter* sp. strain TM1040 possesses genes for four (Fig. 3). Possible substrates for this wealth of catabolic pathways more typical of soil bacteria include phenolic metabolites (e.g., antioxidants, toxins, sunscreens, and predator deterrents) from marine plankton (13, 14), as well as lignin derivatives from coastal marshes (42).

All three *Roseobacter* genomes contain a gene for a demethylase that mediates the first step in DMSP degradation (*dmdA*)

(24). Half of the cultured roseobacters for which a genome sequence is available have this gene, and the DMSP demethylating phenotype has been shown experimentally for *S. pomeroyi* and *Silicibacter* sp. strain TM1040 (24, 40) (Table 3). DMSP can be a major source of both carbon and sulfur for marine bacterioplankton in ocean surface waters (30).

S. pomeroyi harbors two *cox* operons that have been shown experimentally to mediate carbon monoxide oxidation at the low concentrations typical of ocean surface waters (≤ 5 nM) (43). The other two *Roseobacter* genomes likewise contain *cox* clusters: two in *Jannaschia* sp. strain CCS1 (Jann_1763, Jann_1765, and Jann_1766 and Jann_2095, Jann_2096, and Jann_2097) and one in *Silicibacter* sp. strain TM1040 (TM1040_1764, TM1040_1765, and TM1040_1766). Without any apparent mechanism for CO₂ fixation, this pathway may be used by the roseobacters as an energy supplement, potentially resulting in higher heterotrophic growth yields in ocean surface waters where organic matter is limiting but CO is ubiquitous (albeit at low concentrations). Including the nine available draft sequences, all but 1 of 12 *Roseobacter* genomes contain at least one *cox* operon (Table 3).

Members of the *Roseobacter* clade have been found to contribute to aerobic anoxygenic phototrophy (AAnP) in ocean surface waters (4, 46). The genome sequence of *Jannaschia* sp. strain CCS1, along with the recently published genome of *Roseobacter denitrificans* (52), provides insight into the genes of a marine AAnP. With no recognizable carbon fixation pathways, phototrophy may be used by *Jannaschia* sp. strain CCS1 to obtain energy and thereby increase efficiency of heterotrophic growth, as hypothesized for carbon monoxide oxidation. Forty-three genes form a 45.8-kb photosynthetic cluster (Jann_0412-0184) that includes genes for carotenoid biosyn-

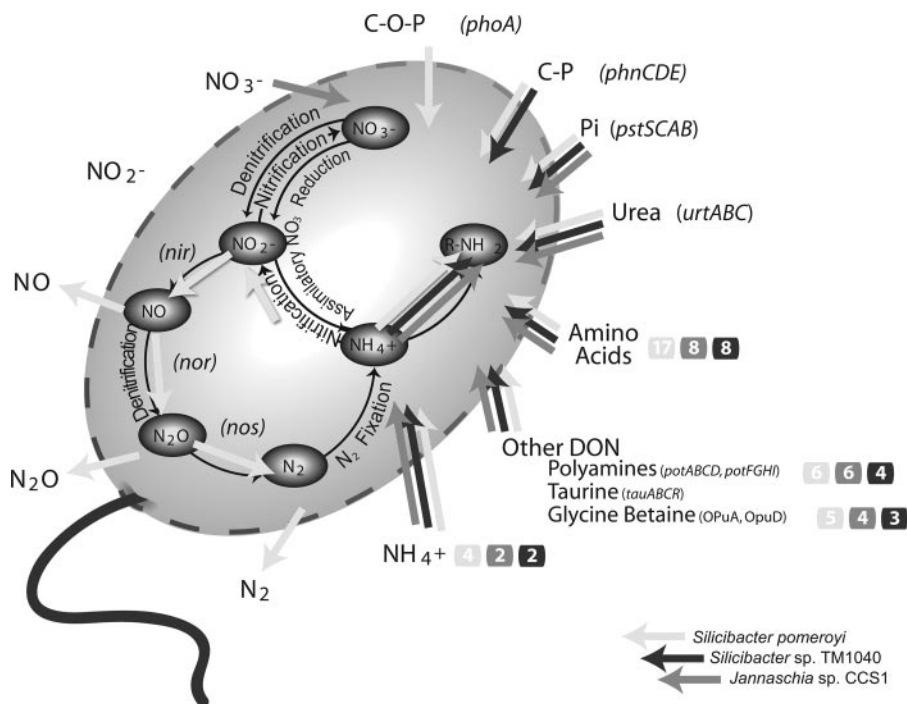


FIG. 4. Genes for acquisition of nitrogen and phosphorus in three *Roseobacter* genomes. Shaded arrows indicate the presence of a pathway (light gray, *S. pomeroyi*; dark gray, *Silicibacter* sp. strain TM1040; medium gray, *Jannaschia* sp. strain CCS1). Numbers in colored circles indicate the number of ORFs if ≥ 2 copies. Amino acid transporters and branched-chain amino acid transporters are summed. C-O-P, phosphoesters; C-P, phosphonates; Pi, phosphate.

thesis (*crt*), bacteriochlorophyll synthesis (*bch*), reaction center and light-harvesting complex I (*puf*), and regulation (*ppaA* and *ppsR*). A smaller group of genes located 146 kb downstream of the main cluster contains genes for the light-harvesting complex II (*pucBACD*; Jann_1581 to Jann_1584). Overall, there is considerable congruence in the photosynthetic gene complements of *Jannaschia* sp. strain CCS1, the marine aerobic anoxygenic phototroph *Erythrobacter* sp. strain NAP1 (which is not a roseobacter), and several anaerobic anoxygenic phototrophs (see Table S4 and Fig. S3 in the supplemental material). Neither the *S. pomeroyi* nor *Silicibacter* sp. strain TM1040 genomes contain phototrophy genes. However, searches of nine additional *Roseobacter* genomes available in draft form (Fig. 1) showed that 25% of these cultured roseobacters are predicted to be phototrophs (Table 3). None of the *Roseobacter* genomes contains evidence of proteorhodopsin-based phototrophy.

All three *Roseobacter* genomes encode a complete tricarboxylic acid (TCA) cycle as well as peripheral pathways such as phosphoenolpyruvate (PEP) carboxylase and (except for *Silicibacter* sp. strain TM1040) the glyoxylate shunt, permitting growth on a variety of organic acids (e.g., acetate and pyruvate). All three strains also harbor genes for the Embden-Meyerhof, Entner-Doudoroff, and pentose phosphate pathways.

(iii) **Acquiring nitrogen and phosphorus.** Organic nitrogen and ammonium appear to serve as the primary sources of cellular nitrogen for marine roseobacters. All three genomes contain genes for the assimilation of urea, amino acids, other nitrogen-rich organic compounds often associated with eukary-

otic plankton (polyamines and the osmolytes taurine and glycine betaine), and ammonium (Fig. 4). This reliance on organic nitrogen and ammonium is in keeping with both the observed vertical distribution of roseobacters (highest abundance in surface waters where regenerated rather than “new” nitrogen dominates) and frequent physical associations with organic N-rich phytoplankton cells (25). Neither nitrate nor nitrite transporters are found in the two *Silicibacter* genomes, and experimental evidence confirms that *S. pomeroyi* cannot assimilate nitrate (see Fig. S4 in the supplemental material). However, *Jannaschia* sp. strain CCS1 has genes for uptake and assimilatory reduction of nitrate (*nrtA*, *-B*, and *-D*; *nirB* and *-A*; and *nasA*) (Fig. 4).

Inorganic P appears to be acquired by all three species through the high-affinity phosphate transport system (*pstSCAB*). Both *Silicibacter* species also have genes for transport (*phnCDE*) and cleavage (*phnGHIJKLN*) of organic P in the form of phosphonates (C-P-bonded phosphorus), one of two major organic P reservoirs in seawater (see Fig. S5 in the supplemental material). Only the *Jannaschia* sp. strain CCS1 genome and one other draft *Roseobacter* genome lack phosphonate transport genes (Table 3). *S. pomeroyi* but not *Silicibacter* sp. strain TM1040 can also obtain organic phosphorus from the other major organic P reservoir, phosphoesters (C-O-P bonded phosphorus; mediated by *phoA*) (Fig. 4). While *Jannaschia* sp. strain CCS1 has neither of the organic phosphorus uptake systems, the presence of genes for inorganic P storage as polyphosphate (*ppk*) (which is missing in the other two genomes) may provide an alternative strategy for maintaining a reliable supply of phosphorus.

(iv) Interfacing with other organisms. Roseobacters harbor a number of genes that may be involved in information, metabolite, and DNA exchange with *Roseobacter* relatives, other bacteria, and marine eukaryotes.

Nonribosomal peptide synthetases (NRPSs) catalyze the synthesis of a wide array of bacterial antibiotics, toxins, siderophores, and other bioactive compounds from common or modified amino acids. *S. pomeroyi* and *Silicibacter* sp. strain TM1040, but not *Jannaschia* sp. strain CCS1, harbor a very similar 10-gene cluster containing two adjacent NRPSs, an NRPS loading enzyme (phosphopantetheinyl transferase family), and four glycosyl transferases. Close homologs of these genes are not found outside the *Roseobacter* group, suggesting they may encode a novel glycosylated peptide that plays a role in defense, signaling, or host-microbe interactions with marine plankton (7).

Roseobacter genes may encode an alternative synthesis pathway for the plant auxin indoleacetic acid (IAA) via indole-3-acetonitrile, including indoleacetamide hydrolase and nitrile hydratase (32) in *S. pomeroyi* and *Silicibacter* sp. strain TM1040 (SPO2938, -1314, and -1315 and TM1040_1578, TM1040_1971, and TM1040_1972) and arylacetone-specific nitrilase (33) in *Jannaschia* sp. strain CCS1 (Jann_3735). If this is the case, the potential benefits of harboring IAA-related genes would include initiation of cell wall loosening and sugar release from phytoplankton cells, as has been found for vascular plants (36).

Twelve *vir*-related ORFs on the pSTM2 plasmid of *Silicibacter* sp. strain TM1040 indicate the presence of a type IV secretion system for translocating DNA or proteins into other cells. These genes have homology to *virD2* and *virD4*, which code for the relaxase and coupling proteins (providing the energetics for export of DNA), and *virB1* to *-11* (excluding *virB7*), which encode the inner membrane channel and pilus structure of the transfer machinery (10) (see Table S5 in the supplemental material). In *Agrobacterium tumefaciens*, homologous *vir* genes move the transferred DNA (T-DNA) into plant cells to initiate gall formation. The association between *Silicibacter* sp. strain TM1040 and dinoflagellate *P. piscicida* (1, 40, 41) tempts speculation that Vir proteins enable roseobacters to transfer DNA or protein directly to phytoplankton cells. The *S. pomeroyi* and *Jannaschia* sp. strain CCS1 genomes do not have *vir* orthologs (see Table S5 in the supplemental material), although half of the 12 complete and draft *Roseobacter* genome sequences do (Table 3).

Overall, the *Roseobacter* gene collection suggests members of this clade have multiple mechanisms for sensing and reacting to their environment while acquiring diverse substrates and nutrients for growth. This is a distinctly different ecological tactic from the “genome streamlining” strategy of other successful marine heterotrophs (18).

Which genes make a roseobacter a roseobacter? Whether or not microbial biogeochemical functions can be predicted from the taxonomic composition of natural communities has been debated among microbial ecologists for more than a decade. While the answer may turn out to be different for each taxon, it hinges on whether functions encoded by a set of unique and predictable genes can be ascribed to most members of a bacterial clade. The *Roseobacter* lineage is a coherent group based on 16S rRNA phylogeny (7), yet the diversity in physiology and habitat within the taxon is considerable (56). Thus, we asked

whether shared genes can be identified that form the basis of a predictable ecological role for marine roseobacters.

The three roseobacters share 1,939 genes, accounting for ~50% of each genome (Table 2). To focus specifically on unique genes, we first narrowed down the three-way ortholog gene set by excluding genes that were also found in nonmarine alphaproteobacterial relatives. We used both protein (BLASTp) and nucleic acid (tBLASTn) homology searches to condense the 1,939 three-way-shared genes to 121 unique *Roseobacter* genes based on their presence in all three *Roseobacter* genomes but their absence in the *Rhodobacter sphaeroides* 2.4.2, *Paracoccus denitrificans*, *Sinorhizobium meliloti* 1021, and *Mesorhizobium loti* MAFF303099 genomes (see Table S6 in the supplemental material).

The 121 *Roseobacter* unique genes are clearly dominated by transport proteins, which account for 37 (31%) of the gene set. Since transporters average 9% of ORFs in *Bacteria* (48) and 6% in the roseobacters, this disproportionately high percentage argues for a central role for transporters in defining the taxon. The compounds predicted to move across *Roseobacter* membranes by the unique transporters include glyoxylate (a product of algal photorespiration and organic matter photooxidation), acetate, allophanate (a breakdown product of urea in chlorophytes and bacteria) (28), arginine, branched-chain amino acids, ammonia, and secondary metabolites. The presence of three sodium-based transporters (one symporter, one antiporter, and one voltage-gated ion channel) is consistent with adaptations to a high-salt environment, as is the abundance of TRAP transporters that likely depend on sodium ions for activity (29). Other gene categories well represented in the unique genes are involved in aromatic compound degradation (four genes), sulfur transport and metabolism (four genes), and methyl group transfer (two genes). There were also genes for extracellular peptide-mediated signaling (rhomboid protein homolog), extracellular degradation of the storage compound polyhydroxybutyrate (poly-3-hydroxybutyrate depolymerase), and resistance to peroxides (hydroperoxide resistance protein) (see Table S6 in the supplemental material). Fifty-one (42%) of the 121 unique genes are in at least 10 of the 12 *Roseobacter* genomes (see Table S6 in the supplemental material). Megaplasmids pSPD1 and pSTM1 of *S. pomeroyi* and *Silicibacter* sp. strain TM1040, respectively, contain unique genes in an unbiased proportion relative to the total gene distribution (e.g., pSPD1 contains 10.4% of the total genes and 12.4% of the unique genes). No unique genes were found on the small *Silicibacter* sp. strain TM1040 or *Jannaschia* sp. strain CCS1 plasmids (pJCS1 and pSTM2), consistent with the idea that the smaller *Roseobacter* plasmids harbor a diverse and nonessential gene pool.

We also analyzed *Roseobacter* genes using a more standard concept of “core” genes, defined here as those present in the three complete plus all nine draft *Roseobacter* genomes using an RBH criterion. Of the 14,287 different genes harbored within the 12 *Roseobacter* genomes, 1,310 are core (Fig. 5). The core gene set includes those for cellular metabolism, energy generation, and ribosomal protein synthesis, among other critical processes (see Table S7 in the supplemental material). The gene set does not include many of the biogeochemically relevant pathways ascribed to roseobacters, such as carbon monoxide oxidation (*cox* genes), sulfur oxidation (*sox* genes),

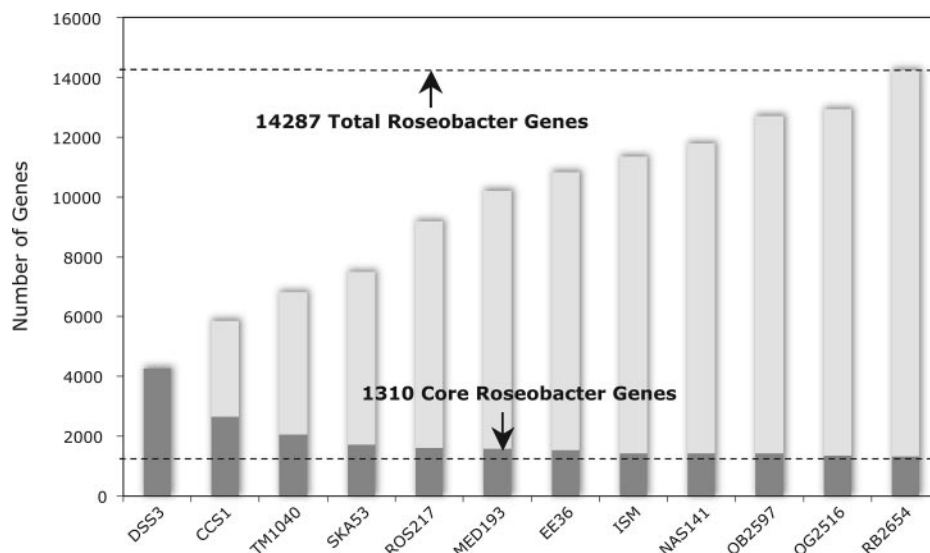


FIG. 5. *Roseobacter* core genes (dark) and total genes (dark plus light) as a function of increasing genome number. Core genes are those with an RBH to the *S. pomeroyi* DSS-3 genome for the indicated genome plus all preceding genomes. Total genes are distinct genes in the *Roseobacter* group, incremented for each genome by the number of genes without an RBH in any of the preceding genomes.

DMSP demethylation (*dmdA*), denitrification (*nirK*, *nirS*, *nor* genes, and *nos* genes), and phosphonate utilization (*phn* genes). Thus, while the total *Roseobacter* gene repertoire consists of a number of ecologically relevant metabolic pathways, only a subset of these are present in any single genome (Table 3). This “mix-and-match” genome arrangement may allow for adaptation to a wide diversity of ecological niches, as has been observed for this group.

Which genes make a roseobacter marine? Classic studies on the existence of distinctly marine bacteria in the 1960s concluded that metabolic pathways of cultured marine bacteria are quite similar to those of nonmarine bacteria and that transport systems based on sodium ions is the main difference between the two groups (37). We took a genomic approach to this question of “marine-biased” functions by identifying *Roseobacter* genes more likely to be found in genomes of other cultured marine taxa than in nonmarine taxa. Using BLASTp, *S. pomeroyi* ORFs were compared against a set of 20 genome pairs, each consisting of a cultured marine bacterioplankton outside the *Roseobacter* clade and its closest nonmarine relative. Forty *S. pomeroyi* genes were identified as having a distribution statistically biased toward the marine bacteria (see Table S8 in the supplemental material [chi square, $P \leq 0.05$]). Three functional gene categories dominated this set: genes involved in sodium transport or utilizing sodium gradients, genes involved in sulfate transport and metabolism, and genes involved in osmoregulation. Sodium-related genes include two sodium symporters that cotransport sodium with other compounds (likely amino acids; SPO1810 and SPO2370), and a respiratory sodium pump (SPOA0030; a component of a multigene NADH:ubiquinone oxidoreductase) that establishes a sodium gradient for ATP synthesis. The sulfur-related genes include two sulfate permeases (SPO1956 and SPO3058) that transport sulfate across the cytoplasmic membrane, a predicted glyoxalase with carbon-sulfur lyase activity (SPO0721), a methionine- γ -lyase (SPOA0318) potentially involved in metabo-

lism of organic sulfur compounds, and an antioxidant that may be specific to sulfur-containing radicals (AhpC/Tsa family protein; SPO2103). Osmoregulation-related genes include osmotically inducible protein *osmC* (SPO2301) and a homolog of the glycine betaine synthesis gene *betA* (SPO0190) (see Table S8 in the supplemental material). The 44 genes in the *Silicibacter* sp. strain TM1040 genome and 36 in the *Jannaschia* sp. strain CCS1 genome, also found significantly more often in other cultured marine than in nonmarine genomes, similarly have sodium-, sulfate-, and osmoregulation-related functions well represented (see Table S8 in the supplemental material). In general, most of the *Roseobacter* genes on the marine-biased list are indeed those that permit the organisms to benefit from or manage the plentiful supply of ions in seawater and few appear to mediate metabolic processes that are unique to or characteristic of marine bacteria. A recent culture-independent study of marine operons also found that genes involved in osmolyte transport systems and sodium-based respiratory pumps were significantly enriched in marine bacterial communities (54).

Marine bacteria in the SAR11 group are very abundant in ocean surface waters and commonly co-occur with *Roseobacter* cells (17). A comparison of the *Roseobacter* genomes to that of SAR11 member *P. ubique* HTCC1062 showed that the *P. ubique* genome contains 547 ORFs (out of 1,354 total) that are not shared with the *Roseobacter* genomes; over a quarter of these are for hypothetical proteins or proteins of unknown function. We looked in the *P. ubique* genome for selected biogeochemically relevant genes identified in *Roseobacter* genomes. Except for the presence of genes for DMSP catabolism (*dmdA*), there was no overlap, suggesting quite distinct ecological roles for these two abundant taxa (Table 3).

Hypothesis generation. Genome sequences of cultured marine bacterioplankton can serve to generate hypotheses about ecological activities and biogeochemical roles of their uncultured relatives. Aspects of the *Roseobacter* genomes suggest

that they live in nutrient-replete plankton aggregates within the bulk oligotrophic ocean. Typical components of eukaryotic cytosols can be transported by the roseobacters, such as polyamines, taurine, phosphoesters, phosphonates, aromatic metabolites, glyoxylate, allophanate, acetate, glycine betaine, DMSP, branched-chain amino acids, and organic acids. Many of these compounds are produced by phytoplankton or zooplankton (23, 30, 34, 44) and may become available to roseobacters through exudation, diffusion-driven loss, or trophodynamic interactions including grazing and viral lysis. Regular observations of associations between roseobacters and marine phytoplankton in algal blooms (45, 49) and phycospheres of cultured dinoflagellates and diatoms (1, 25) are consistent with this idea. Members of the *Roseobacter* clade appear to exhibit a gradient in their reliance on "hot spots" in ocean waters, however. For example, *Jannaschia* sp. strain CCS1 differs from the other two roseobacters in that its genome indicates it is phototrophic, transports and reduces nitrate, only assimilates inorganic forms of P, and has only one rRNA operon with which to gear up metabolic activity in response to transient nutrient availability (compared to three in *S. pomeroyi* and five in *Silicibacter* sp. strain TM1040) (31).

The repertoire of *Roseobacter* genes also generates the hypothesis that they frequently interact with neighboring cells, possibly to increase their own access to resources. Abundant toxin and metabolite (DMT) transporters, NRPS and possibly IAA synthesis pathways, extracellular polyhydroxybutyrate degradation, β -lactamase-related proteins, extracellular peptide signaling genes, and RND-MFP (resistance nodulation division-membrane fusion protein) family proteins support this idea. Although speculative, it is possible that roseobacters directly capture organic matter from eukaryotic cells through Vir proteins, IAA production, or hemolysin-type proteins. Such activity would influence the amount of carbon and nutrients entering the microbial food web (2) and affect their availability to metazoans.

At least two successful ecological strategies for marine bacterioplankton thus appear to operate in ocean surface waters. One tactic, typified by the roseobacters, is based on metabolically versatile cells that can compete well with other organisms for labile substrates within plankton-dense microzones. Another tactic, typified by SAR11 clade members, is based on metabolically conservative, free-living cells that scavenge dilute organic matter dissolved in seawater (18). Members of the *Roseobacter* and SAR11 clades represent a significant fraction of marine bacterioplankton communities, together accounting for $\geq 30\%$ of the bacterioplankton in most ocean surface waters (17, 19, 20). As more genomic information emerges for these and other key bacterioplankton clades, including those yet to be cultured, insights into the biochemical capabilities of individual cells will enrich understanding of bacterial ecology and ocean-scale biogeochemical processes.

ACKNOWLEDGMENTS

We thank M. Joye for unpublished data. The Department of Energy provided genome sequences of *Silicibacter* sp. strain TM1040 and *Jannaschia* sp. strain CCS1.

This work was supported by grants from the National Science Foundation (MCB-0531476 to M.A.M., MCB-0446001 to R.B., and MCB-0534203 to A.B.) and the Gordon and Betty Moore Foundation.

REFERENCES

- Alavi, M., T. Miller, K. Erlandson, R. Schneide, and R. Belas. 2001. Bacterial community associated with *Pfiesteria*-like dinoflagellate cultures. *Environ. Microbiol.* **3**:380–396.
- Azam, F. 1998. Microbial control of oceanic carbon flux: the plot thickens. *Science* **280**:694–696.
- Bateman, A., L. Coin, R. Durbin, R. D. Finn, V. Hollich, et al. 2004. The Pfam protein families database. *Nucleic Acids Res.* **32**:D138–D141.
- Béjà, O., M. T. Suzuki, J. F. Heidelberg, W. C. Nelson, C. M. Preston, et al. 2002. Unsuspected diversity among marine aerobic anoxygenic phototrophs. *Nature* **415**:630–633.
- Buchan, A., L. S. Collier, E. L. Neidle, and M. A. Moran. 2000. Key aromatic-ring-cleaving enzyme, protocatechuate 3,4-dioxygenase, in the ecologically important marine *Roseobacter* lineage. *Appl. Environ. Microbiol.* **66**:4662–4672.
- Buchan, A., E. L. Neidle, and M. A. Moran. 2004. Diverse organization of genes of the β -ketoadipate pathway in members of the marine *Roseobacter* lineage. *Appl. Environ. Microbiol.* **70**:1658–1668.
- Buchan, A., J. M. González, and M. A. Moran. 2005. Overview of the marine *Roseobacter* lineage. *Appl. Environ. Microbiol.* **71**:5665–5677.
- Button, D. K. 1991. Biochemical basis for whole-cell uptake kinetics: specific affinity, oligotrophic capacity, and the meaning of the Michaelis constant. *Appl. Environ. Microbiol.* **57**:2033–2038.
- Chen, F., K. Wang, J. Stewart, and R. Belas. 2006. Induction of multiple prophages from a marine bacterium: a genomic approach. *Environ. Microbiol.* **72**:4995–5001.
- Christie, P. J., K. Atmakuri, V. Krishnamoorthy, S. Jakubowski, and E. Cascales. 2005. Biogenesis, architecture, and function of bacterial type IV secretion systems. *Annu. Rev. Microbiol.* **59**:451–485.
- DeLong, E. F. 2005. Microbial community genomics in the ocean. *Nat. Rev. Microbiol.* **3**:459–469.
- Dolowy, P., J. Mondzelewski, R. Zawadzka, J. Baj, and D. Bartosik. 2005. Cloning and characterization of a region responsible for the maintenance of megaplasmid pTAV3 of *Paracoccus versutus* UW1. *Plasmid* **53**:239–250.
- Duval, B., K. Shetty, and W. H. J. Thomas. 1999. Phenolic compounds and antioxidant properties in the snow alga *Chlamydomonas nivalis* after exposure to UV light. *Appl. Phycol.* **11**:559–566.
- Faulkner, D. J. 2000. Marine natural products. *Nat. Prod. Rep.* **17**:7–55.
- Field, J. G., K. R. Clarke, and R. M. Warwick. 1982. A practical strategy for analysing multispecies distribution patterns. *Mar. Ecol. Prog. Ser.* **8**:37–52.
- Gabriel, D. W., C. Allen, M. Schell, T. P. Denny, J. T. Greenberg, et al. 2006. Identification of open reading frames unique to a select agent: *Ralstonia solanacearum* race 3 biovar 2. *Mol. Plant-Microbe Inter.* **19**:69–79.
- Giovannoni, S. J., and M. S. Rappé. 2000. The uncultured microbial majority, p. 47–84. *In* D. L. Kirchman (ed.), *Microbial ecology of the oceans*. John Wiley & Sons, New York, NY.
- Giovannoni, S. J., H. J. Tripp, S. Givan, M. Podar, K. L. Vergin, et al. 2005. Genome streamlining in a cosmopolitan oceanic bacterium. *Science* **309**:1242–1245.
- González, J. M., and M. A. Moran. 1997. Numerical dominance of a group of marine bacteria in the α -subclass of the class *Proteobacteria* in coastal seawater. *Appl. Environ. Microbiol.* **63**:4237–4242.
- González, J. M., R. Simó, R. Massana, J. S. Covert, E. O. Casamayor, C. Pedrós-Alió, and M. A. Moran. 2000. Bacterial community structure associated with a dimethylsulfoniopropionate-producing North Atlantic algal bloom. *Appl. Environ. Microbiol.* **66**:4237–4246.
- González, J. M., J. S. Covert, W. B. Whitman, J. Henriksen, F. Mayer, et al. 2003. *Silicibacter pomeroyi* sp. nov. and *Roseovarius nubinihibens* sp. nov., DMSP demethylating bacteria from marine environments. *Int. J. Syst. Evol. Microbiol.* **53**:1261–1269.
- Han, C. S., and P. Chain. 2006. Finishing repeat regions automatically with Dupfinisher, p. 141–146. *In* H. R. Arabnia and H. Valafar (ed.), *Proceedings of the 2006 International Conference on Bioinformatics and Computational Biology*. CSREA Press, Las Vegas, NV.
- Hellebust, J. A. 1965. Excretion of some organic compounds by marine phytoplankton. *Limnol. Oceanogr.* **10**:192–206.
- Howard, E. C., J. R. Henriksen, A. Buchan, C. R. Reisch, H. Bürgmann, et al. 2006. Bacterial taxa limiting sulfur flux from the ocean. *Science* **314**:649–652.
- Jasti, S., M. E. Sieracki, N. J. Poulton, M. W. Giewat, and J. N. Rooney-Varga. 2005. Phylogenetic diversity and specificity of bacteria closely associated with *Alexandrium* spp. and other phytoplankton. *Appl. Environ. Microbiol.* **71**:3483–3494.
- Jung, A., T. Domratheva, M. Tarutina, Q. Wu, W. H. Ko, et al. 2005. Structure of a bacterial BLUF photoreceptor: insights into blue light-mediated signal transduction. *Proc. Natl. Acad. Sci. USA* **102**:12350–12355.
- Käll, L., A. Krogh, and E. L. L. Sonnhammer. 2004. A combined transmembrane topology and signal peptide prediction method. *J. Mol. Biol.* **338**:1027–1036.
- Kanamori, T., N. Kanou, H. Atomi, and T. Imanaka. 2004. Enzymatic characterization of a prokaryotic urea carboxylase. *J. Bacteriol.* **186**:2532–2539.

29. Kelly, D. J., and G. H. Thomas. 2001. The tripartite ATP-independent periplasmic (TRAP) transporters of bacteria and archaea. *FEMS Microbiol. Rev.* **25**:405–424.
30. Kiene, R. P., L. J. Linn, and J. A. Bruton. 2000. New and important roles for DMSP in marine microbial communities. *J. Sea Res.* **43**:209–224.
31. Klappenbach, J. A., J. Dunbar, and T. M. Schmidt. 2000. rRNA operon copy number reflects ecological strategies of bacteria. *Appl. Environ. Microbiol.* **66**:1328–1333.
32. Kobayashi, M., H. Izui, T. Nagasawa, and H. Yamada. 1993. Nitrilase in biosynthesis of the plant hormone indole-3-acetic acid from indole-3-acetonitrile: cloning of the *Alcaligenes* gene and site-directed mutagenesis of cysteine residues. *Proc. Natl. Acad. Sci. USA* **90**:247–251.
33. Kobayashi, M., T. Suzuki, T. Fujita, M. Masuda, and S. Shimizu. 1995. Occurrence of enzymes involved in biosynthesis of indole-3-acetic acid from indole-3-acetonitrile in plant-associated bacteria, *Agrobacterium* and *Rhizobium*. *Proc. Natl. Acad. Sci. USA* **92**:714–718.
34. Lee, C., and N. O. G. Jorgensen. 1995. Seasonal cycling of putrescine and amino-acids in relation to biological production in a stratified coastal salt pond. *Biogeochemistry* **29**:131–157.
35. Letunic, I., R. R. Copley, S. Schmidt, F. D. Ciccarelli, T. Doerks, et al. 2004. SMART 4.0: towards genomic data integration. *Nucleic Acids Res.* **32**:D142–D144.
36. Lindow, S. E., and M. T. Brandl. 2003. Microbiology of the phyllosphere. *Appl. Environ. Microbiol.* **69**:1875–1883.
37. MacLeod, R. A. 1965. The question of the existence of specific marine bacteria. *Bacteriol. Rev.* **29**:9–23.
38. Malmstrom, R. R., R. P. Kiene, and D. L. Kirchman. 2004. Identification and enumeration of bacteria assimilating dimethylsulfoniopropionate (DMSP) in the North Atlantic and Gulf of Mexico. *Limnol. Oceanogr.* **49**:597–606.
39. Meyer, F., A. Goesmann, A. C. McHardy, D. Bartels, T. Bekel, et al. 2003. GenDB—an open source genome annotation system for prokaryote genomes. *Nucleic Acids Res.* **31**:2187–2195.
40. Miller, T. R., and R. Belas. 2004. Dimethylsulfoniopropionate metabolism by *Pfiesteria*-associated *Roseobacter* spp. *Appl. Environ. Microbiol.* **70**:3383–3391.
41. Miller, T. R., and R. Belas. 2006. Motility is involved in *Silicibacter* sp. TM1040 interaction with dinoflagellates. *Environ. Microbiol.* **8**:1648–1659.
42. Moran, M. A., and R. E. Hodson. 1994. Dissolved humic substances of vascular plant origin in a coastal marine environment. *Limnol. Oceanogr.* **39**:762–771.
43. Moran, M. A., A. Buchan, J. M. González, J. F. Heidelberg, W. B. Whitman, et al. 2004. Genome sequence of *Silicibacter pomeroyi* reveals adaptations to the marine environment. *Nature* **432**:910–913.
44. Nishibori, N., A. Yuasa, M. Sakai, S. Fujihara, and S. Nishio. 2001. Free polyamine concentrations in coastal seawater during phytoplankton bloom. *Fish. Sci.* **67**:79–83.
45. Pinhassi, J., R. Simó, J. M. González, M. Vila, L. Alonso-Sáez, et al. 2005. Dimethylsulfoniopropionate turnover is linked to the composition and dynamics of the bacterioplankton assemblage during a microcosm phytoplankton bloom. *Appl. Environ. Microbiol.* **71**:7650–7660.
46. Pradella, S., M. Allgaier, C. Hoch, O. Pärker, E. Stackebrandt, et al. 2004. Genome organization and localization of the *pufLM* genes of the photosynthesis reaction center in phylogenetically diverse marine *Alphaproteobacteria*. *Appl. Environ. Microbiol.* **70**:3360–3369.
47. Quest, B., and W. Gärtner. 2004. Chromophore selectivity in bacterial phytochromes. *Eur. J. Biochem.* **271**:1117–1126.
48. Ren, Q., and I. T. Paulsen. 2005. Comparative analyses of fundamental differences in membrane transport capabilities in prokaryotes and eukaryotes. *PLoS Comput. Biol.* **1**:e27.
49. Riemann, L., G. F. Steward, and F. Azam. 2000. Dynamics of bacterial community composition and activity during a mesocosm diatom bloom. *Appl. Environ. Microbiol.* **66**:578–587.
50. Rutherford, K., J. Parkhill, J. Crook, T. Horsnell, P. Rice, et al. 2000. Artemis: sequence visualization and annotation. *Bioinformatics* **16**:944–945.
51. Santos, S. R., and H. Ochman. 2004. Identification and phylogenetic sorting of bacterial lineages with universally conserved genes and proteins. *Environ. Microbiol.* **6**:754–759.
52. Swingle, W. D., S. Sadekar, S. D. Mastrian, H. J. Matthies, J. Hao, et al. 2007. The complete genome sequence of *Roseobacter denitrificans* reveals a mixotrophic rather than photosynthetic metabolism. *J. Bacteriol.* **189**:683–690.
53. Swofford, D. L. 2002. PAUP*: Phylogenetic Analysis Using Parsimony (and other methods) 4.0. Illinois Natural History Survey, University of Illinois, Champaign.
54. Tringe, S. G., C. von Mering, A. Kobayashi, A. A. Salamov, K. Chen, et al. 2005. Comparative metagenomics of microbial communities. *Science* **308**:554–557.
55. Ulrich, L. E., E. V. Koonin, and I. B. Zhulin. 2005. One-component systems dominate signal transduction in prokaryotes. *Trends Microbiol.* **13**:52–56.
56. Wagner-Döbler, I., and H. Biebl. 2006. Environmental biology of the marine *Roseobacter* lineage. *Annu. Rev. Microbiol.* **60**:255–280.
57. Zhong, Z., R. Caspi, D. Helinski, V. Knauf, S. Sykes, et al. 2003. Nucleotide sequence based characterizations of two cryptic plasmids from the marine bacterium *Ruegeria* isolate PR1b. *Plasmid* **49**:233–252.