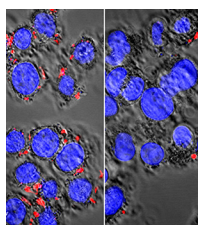


CONTENTS • JUNE 2019 • VOLUME 85, NO. 12

COVER IMAGE



Cover photograph: The image shows the adhesion of a *Yersinia pestis* *ail* knockdown strain to HeLa cells. *Y. pestis*, the etiological agent of plague, uses a major adhesion (Ail) to bind to the extracellular matrix of host cells, which is essential for its full virulence. HeLa cells were infected with the *Y. pestis* containing an inducible CRISPR interference (CRISPRi) system that expresses catalytically dead Cas9 (dCad9) and *ail*-targeting small guide RNA (sgRNA) only in the presence of the anhydrotetracycline inducer. After infection, the floating bacteria were removed and the attached bacilli were stained using anti-F1 antibody and Alexa Fluor 555-conjugated secondary antibody. The adhesion of the *ail* knockdown strain of *Y. pestis* to HeLa cells was drastically reduced. (See related article at e00097-19.) (Copyright © 2019 American Society for Microbiology. All Rights Reserved.)

SPOTLIGHT

Articles of Significant Interest in This Issue e00921-19

ENVIRONMENTAL MICROBIOLOGY

Deep-Subsurface Pressure Stimulates Metabolic Plasticity in Shale-Colonizing *Halanaerobium* spp. e00018-19

Anne E. Booker, David W. Hoyt, Tea Meulia, Elizabeth Eder, Carrie D. Nicora, Samuel O. Purvine, Rebecca A. Daly, Joseph D. Moore, Kenneth Wunch, Susan M. Pfiffner, Mary S. Lipton, Paula J. Mouser, Kelly C. Wrighton, Michael J. Wilkins

Molecular Mechanism of *N,N*-Dimethylformamide Degradation in *Methylobacterium* sp. Strain DM1 e00275-19

Xinyu Lu, Weiwei Wang, Lige Zhang, Haiyang Hu, Ping Xu, Tao Wei, Hongzhi Tang

Biofilm Formation and Synthesis of Antimicrobial Compounds by the Biocontrol Agent *Bacillus velezensis* QST713 in an *Agaricus bisporus* Compost Micromodel e00327-19

Caroline Pandin, Maud Darsonval, Camille Mayeur, Dominique Le Coq, Stéphane Aymerich, Romain Briandet

ENZYMOLGY AND PROTEIN ENGINEERING

Following the Evolutionary Track of a Highly Specific L-Arginine Oxidase by Reconstruction and Biochemical Analysis of Ancestral and Native Enzymes e00459-19

Shogo Nakano, Masazumi Niwa, Yasuhisa Asano, Sohei Ito

FOOD MICROBIOLOGY

Decontamination Effect of the Spindle and 222-Nanometer Krypton-Chlorine Excimer Lamp Combination against Pathogens on Apples (*Malus domestica* Borkh.) and Bell Peppers (*Capsicum annuum* L.) e00006-19

Jun-Won Kang, Dong-Hyun Kang

GENETICS AND MOLECULAR BIOLOGY

Reversible Gene Expression Control in *Yersinia pestis* by Using an Optimized CRISPR Interference System e00097-19

Tong Wang, Min Wang, Qingwen Zhang, Shiyang Cao, Xiang Li, Zhizhen Qi, Yafang Tan, Yang You, Yujing Bi, Yajun Song, Ruifu Yang, Zongmin Du

The Blue-Light Photoreceptor *Sfwc-1* Gene Regulates the Phototropic Response and Fruiting-Body Development in the Homothallic Ascomycete *Sordaria fimicola* e02206-18

Kulsumpun Krobanan, Syun-Wun Liang, Ho-Chen Chiu, Wei-Chiang Shen

GEOMICROBIOLOGY

- Wetland Sediments Host Diverse Microbial Taxa Capable of Cycling Alcohols** e00189-19
Paula Dalcin Martins, Jeroen Frank, Hugh Mitchell, Lye Meng Markillie, Michael J. Wilkins

MICROBIAL ECOLOGY

- Changes in Fungal Communities across a Forest Disturbance Gradient** e00080-19
Lingling Shi, Gbadamassi G. O. Dossa, Ekananda Paudel, Huadong Zang, Jianchu Xu, Rhett D. Harrison

PUBLIC AND ENVIRONMENTAL HEALTH MICROBIOLOGY

- Commensal *Escherichia coli* Aggravates Acute Necrotizing Pancreatitis through Targeting of Intestinal Epithelial Cells** e00059-19
Junyuan Zheng, Lihong Lou, Junjie Fan, Chunlan Huang, Qixiang Mei, Jianghong Wu, Yuecheng Guo, Yingying Lu, Xingpeng Wang, Yue Zeng
- Spiked Virus Level Needed To Correctly Assess Enteric Virus Recovery in Water Matrices** e00111-19
Qiaozhi Li, Yuanyuan Qiu, Xiao L. Pang, Nicholas J. Ashbolt