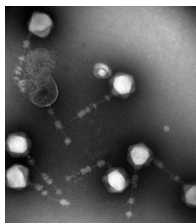




CONTENTS • MAY 2021 • VOLUME 87, NO. 10

COVER IMAGE



Cover photograph: A transmission electron micrograph of bacteriophage isolate 6B, which was obtained from Hawaiian seawater, reveals highly segmented tail sheaths. This phage is a member of the family *Myoviridae* and is lytic toward the larval oyster pathogens *Vibrio coralliilyticus* and *Vibrio tubiashii*. Episodic outbreaks of vibriosis in hatcheries often lead to shortages of seed oysters required to sustain the commercial oyster industry. Phage therapy is offering new hope for reducing diseases in hatcheries and other aquaculture ventures. (See related article at e00008-21.) (Copyright © 2021 American Society for Microbiology. All Rights Reserved.)

SPOTLIGHT

Articles of Significant Interest in This Issue e00550-21

MINIREVIEW

Cytochromes in Extracellular Electron Transfer in *Geobacter* spp. e03109-20
Toshiyuki Ueki

BIOTECHNOLOGY

Cranberry-Derived Proanthocyanidins Potentiate β -Lactam Antibiotics against Resistant Bacteria e00127-21
Mathias Gallique, Kuan Wei, Vimal B. Maisuria, Mira Okshevsky, Geoffrey McKay, Dao Nguyen, Nathalie Tufenkji

Identification of Fungal Limonene-3-Hydroxylase for Biotechnological Menthol Production e02873-20
Florence M. Schempp, Ingmar Strobel, Maria M. W. Etschmann, Elena Bierwirth, Johannes Panten, Hendrik Schewe, Jens Schrader, Markus Buchhaupt

Engineering of the Small Noncoding RNA (sRNA) DsrA Together with the sRNA Chaperone Hfq Enhances the Acid Tolerance of *Escherichia coli* e02923-20
Zhanglin Lin, Jiahui Li, Xiaofang Yan, Jingduan Yang, Xiaofan Li, Ping Chen, Xiaofeng Yang

ENVIRONMENTAL MICROBIOLOGY

Bacteriophages against *Vibrio coralliilyticus* and *Vibrio tubiashii*: Isolation, Characterization, and Remediation of Larval Oyster Mortalities e00008-21
Gary P. Richards, Michael A. Watson, David Madison, Nitzan Soffer, David S. Needleman, Douglas S. Soroka, Joseph Uknalis, Gian Marco Baranzoni, Karlee M. Church, Shawn W. Polson, Ralph Elston, Chris Langdon, Alexander Sulakvelidze

Occurrence and Transmission of *bla*_{NDM}-Carrying *Enterobacteriaceae* from Geese and the Surrounding Environment on a Commercial Goose Farm e00087-21
Dao-Ji Cen, Ruan-Yang Sun, Jia-Lin Mai, Yu-Wei Jiang, Dong Wang, Wen-Ying Guo, Qi Jiang, Hui Zhang, Jin-Fei Zhang, Rong-Min Zhang, Jian Sun, Xiao-Ping Liao, Ya-Hong Liu, Liang-Xing Fang

Long-Term Exposure to Octenidine in a Simulated Sink Trap Environment Results in Selection of *Pseudomonas aeruginosa*, *Citrobacter*, and *Enterobacter* Isolates with Mutations in Efflux Pump Regulators e00210-21
Isobel Garratt, Paz Aranega-Bou, J. Mark Sutton, Ginny Moore, Matthew E. Wand

Local Adaptation of <i>Legionella pneumophila</i> within a Hospital Hot Water System Increases Tolerance to Copper	e00242-21
<i>Emilie Bédard, Hana Trigui, Jeffrey Liang, Margot Doberva, Kiran Paranjape, Cindy Lalancette, Séverine Allegra, Sebastien P. Faucher, Michèle Prévost</i>	
An Antifungal Polycyclic Tetramate Macrolactam, Heat-Stable Antifungal Factor (HSAF), Is a Novel Oxidative Stress Modulator in <i>Lysobacter enzymogenes</i>	e03105-20
<i>Lingjun Yu, Hui Li, Zaichun Zhou, Fengquan Liu, Liangcheng Du</i>	
Identification of an Intermediate Form of Ferredoxin That Binds Only Iron Suggests That Conversion to Holo-Ferredoxin Is Independent of the ISC System in <i>Escherichia coli</i>	e03153-20
<i>Xiaojun Ren, Feng Liang, Zhengfen He, Bingqian Fan, Zhirong Zhang, Xiudi Guo, Yukuan Du, Yilin Pang, Jianghui Li, Jianxin Lyu, Guoqiang Tan</i>	
Identification and Predictions Regarding the Biosynthesis Pathway of Polyene Macrolides Produced by <i>Streptomyces roseoflavus</i> Men-myc-93-63	e03157-20
<i>Xing Han, Jiao Wang, Lianna Liu, Fengying Shen, Qingfang Meng, Xing Li, Yaning Li, Daqun Liu</i>	
Effective Antibacterial and Antihemolysin Activities of Ellipticine Hydrochloride against <i>Streptococcus suis</i> in a Mouse Model	e03165-20
<i>Chenchen Wang, Hao Lu, Manli Liu, Gaoyan Wang, Xiaodan Li, Wenjia Lu, Wenqi Dong, Xiangru Wang, Huanchun Chen, Chen Tan</i>	
ENZYMOLOGY AND PROTEIN ENGINEERING	
Novel 3-O-α-D-Galactosyl-α-L-Arabinofuranosidase for the Assimilation of Gum Arabic Arabinogalactan Protein in <i>Bifidobacterium longum</i> subsp. <i>longum</i>	e02690-20
<i>Yuki Sasaki, Ayako Horigome, Toshitaka Odamaki, Jin-Zhong Xiao, Akihiro Ishiwata, Yukishige Ito, Kanefumi Kitahara, Kiyotaka Fujita</i>	
FOOD MICROBIOLOGY	
Distribution of ϵ-Poly-L-Lysine Synthetases in Coryneform Bacteria Isolated from Cheese and Human Skin	e01841-20
<i>Xinglin Jiang, Yulia Radko, Tetiana Gren, Emilia Palazzotto, Tue Sparholt Jørgensen, Tao Cheng, Mo Xian, Tilmann Weber, Sang Yup Lee</i>	
Biofilm Formation by <i>Listeria monocytogenes</i> 15G01, a Persistent Isolate from a Seafood-Processing Plant, Is Influenced by Inactivation of Multiple Genes Belonging to Different Functional Groups	e02349-20
<i>Jessika Nowak, Sandra B. Visnovsky, Andrew R. Pitman, Cristina D. Cruz, Jon Palmer, Graham C. Fletcher, Steve Flint</i>	
Manure-Based Amendments Influence Surface-Associated Bacteria and Markers of Antibiotic Resistance on Radishes Grown in Soils with Different Textures	e02753-20
<i>Giselle K. P. Guron, Chaoqi Chen, Pang Du, Amy Pruden, Monica A. Ponder</i>	
GENETICS AND MOLECULAR BIOLOGY	
Natural Transformation in a Classical-Biotype <i>Vibrio cholerae</i> Strain	e00060-21
<i>Cameron J. Lloyd, Adrian Mejia-Santana, Triana N. Dalia, Ankur B. Dalia, Karl E. Klose</i>	

- Calcium-Regulated Protein CarP Responds to Multiple Host Signals and Mediates Regulation of *Pseudomonas aeruginosa* Virulence by Calcium** e00061-21
Michelle King, Aya Kubo, Leah Kafer, Reygan Braga, Daniel McLeod, Sharmily Khanam, Tyrrell Conway, Marianna A. Patrauchan
- Improving Acetic Acid and Furfural Resistance of Xylose-Fermenting *Saccharomyces cerevisiae* Strains by Regulating Novel Transcription Factors Revealed via Comparative Transcriptomic Analysis** e00158-21
Bo Li, Li Wang, Ya-Jing Wu, Zi-Yuan Xia, Bai-Xue Yang, Yue-Qin Tang
- Generation of Genetic Tools for Gauging Multiple-Gene Expression at the Single-Cell Level** e02956-20
Marta Mellini, Massimiliano Lucidi, Francesco Imperi, Paolo Visca, Livia Leoni, Giordano Rampioni
- INVERTEBRATE MICROBIOLOGY**
- Macrobodella decora*: Old World Leech Gut Microbial Community Structure Conserved in a New World Leech** e02082-20
Emily Ann McClure, Michael C. Nelson, Amy Lin, Joerg Graf
- MICROBIAL ECOLOGY**
- The Nutritional Significance of Intestinal Fungi: Alteration of Dietary Carbohydrate Composition Triggers Colonic Fungal Community Shifts in a Pig Model** e00038-21
Yuheng Luo, Jiayan Li, Hua Zhou, Bing Yu, Jun He, Aimin Wu, Zhiqing Huang, Ping Zheng, Xiangbing Mao, Jie Yu, Hua Li, Huifen Wang, Quyuan Wang, Hui Yan, Daiwen Chen
- Biogenic Amines Increase the Odds of Bacterial Vaginosis and Affect the Growth of and Lactic Acid Production by Vaginal *Lactobacillus* spp.** e03068-20
Joanna-Lynn C. Borgogna, Michelle D. Shardell, Savannah G. Grace, Elisa K. Santori, Benjamin Americus, Zhong Li, Alexander Ulanov, Larry Forney, Tiffanie M. Nelson, Rebecca M. Brotman, Jacques Ravel, Carl J. Yeoman
- PLANT MICROBIOLOGY**
- Hyperlocal Variation in Soil Iron and the Rhizosphere Bacterial Community Determines Dollar Spot Development in Amenity Turfgrass** e00149-21
Ming-Yi Chou, Smita Shrestha, Renee Rioux, Paul Koch
- Soybean Root Nodule and Rhizosphere Microbiome: Distribution of Rhizobial and Nonrhizobial Endophytes** e02884-20
Parris Mayhood, Babur S. Mirza
- PUBLIC AND ENVIRONMENTAL HEALTH MICROBIOLOGY**
- Detection of Rotavirus Vaccine Strains in Oysters and Sewage and Their Relationship with the Gastroenteritis Epidemic** e02547-20
Erika Ito, Jian Pu, Takayuki Miura, Shinobu Kazama, Masateru Nishiyama, Hiroaki Ito, Yoshimitsu Konta, Tatsuo Omura, Toru Watanabe
- Antimicrobial Resistance in Porcine Enterococci in Australia and the Ramifications for Human Health** e03037-20
Terence Lee, David Jordan, Shafi Sahibzada, Rebecca Abraham, Stanley Pang, Geoffrey W. Coombs, Mark O'Dea, Sam Abraham

Prevalence and Epidemiology of Non-O157 *Escherichia coli* Serogroups O26, O103, O111, and O145 and Shiga Toxin Gene Carriage in Scottish Cattle, 2014–2015

e03142-20

Deborah V. Hoyle, Marianne Keith, Helen Williamson, Kareen Macleod, Heather Mathie, Ian Handel, Carol Currie, Anne Holmes, Lesley Allison, Rebecca McLean, Rebecca Callaby, Thibaud Porphyre, Sue C. Tongue, Madeleine K. Henry, Judith Evans, George J. Gunn, David L. Gally, Nuno Silva, Margo E. Chase-Topping