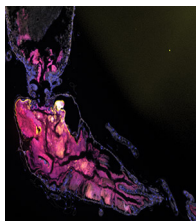


CONTENTS • APRIL 2021 • VOLUME 87, NO. 8

COVER IMAGE



*Cover photograph:* Localization of microbial community within the midgut (upper left) and hindgut (lower half) of the turtle ant (*Cephalotes* sp.) by fluorescent *in situ* hybridization. A specific probe for *Rhizobiales* (Rhizo1244-Cy5; yellow fluorescence) and a universal 16S rRNA bacterial probe (magenta fluorescence) were used. This image illustrates that the bacterial community aggregates predominantly within the posterior midgut and the ileum in turtle ant guts and *Rhizobiales* bacteria specifically cluster at the juncture of the midgut and the hindgut. (See related article at e02803-20.) (Courtesy of Piotr Łukasik; reprinted with permission.)

SPOTLIGHT

Articles of Significant Interest in This Issue

e00345-21

BIODEGRADATION

**Redundancy in Aromatic O-Demethylation and Ring-Opening Reactions in *Novosphingobium aromaticivorans* and Their Impact in the Metabolism of Plant-Derived Phenolics**

e02794-20

*Jose M. Perez, Wayne S. Kontur, Carson Gehl, Derek M. Gille, Yanjun Ma, Alyssa V. Niles, German Umana, Timothy J. Donohue, Daniel R. Noguera*

**A Novel Esterase, DacA<sub>pvar</sub> from *Comamonas* sp. Strain NyZ500 with Deacetylation Activity for the Acetylated Polymer Polyvinyl Alcohol**

e03016-20

*Chao-Fan Yin, Ying Xu, Shi-Kai Deng, Wen-Long Yue, Ning-Yi Zhou*

ENVIRONMENTAL MICROBIOLOGY

**Alternative Splicing of Heat Shock Transcription Factor 2 Regulates Expression of the Laccase Gene Family in Response to Copper in *Trametes trogii***

e00055-21

*Yu Zhang, Yuanyuan Wu, Xulei Yang, En Yang, Huini Xu, Yuhui Chen, Irbis Chagan, Jinping Yan*

**Microbial Community Shifts Reflect Losses of Native Soil Carbon with Pyrogenic and Fresh Organic Matter Additions and Are Greatest in Low-Carbon Soils**

e02555-20

*Thea Whitman, Silene DeCiucies, Kelly Hanley, Akio Enders, Jamie Woollet, Johannes Lehmann*

**Pyruvate Accelerates Palladium Reduction by Regulating Catabolism and the Electron Transfer Pathway in *Shewanella oneidensis***

e02716-20

*Yuan-Yuan Cheng, Wen-Jing Wang, Shi-Ting Ding, Ming-Xing Zhang, Ai-Guo Tang, Ling Zhang, Dao-Bo Li, Bing-Bing Li, Guo-Zhi Deng, Chao Wu*

***Haloferax mediterranei* Halolysin R4 Confers Antagonistic and Defensive Capabilities**

e02889-20

*Shaoxing Chen, Siqi Sun, Rui Wang, Hongli Feng, Hua Xiang*

**Comparative Genome Analyses of *Lactobacillus crispatus* Isolates from Different Ecological Niches Reveal an Adaptation of This Species to the Human Vaginal Environment**

e02899-20

*Leonardo Mancabelli, Walter Mancino, Gabriele Andrea Lugli, Christian Milani, Alice Viappiani, Rosaria Anzalone, Giulia Longhi, Douwe van Sinderen, Marco Ventura, Francesca Turrone*

<b>Transient Surface Hydration Impacts Biogeography and Intercellular Interactions of Nonmotile Bacteria</b>	<b>e03067-20</b>
<i>Abigail A. Weaver, Diogo Bolster, Chinedu S. Madukoma, Anne E. Mattingly, Nydia Morales-Soto, Joshua D. Shrout</i>	
<b>Quantifying Potential N Turnover Rates in Hypersaline Microbial Mats by Using <sup>15</sup>N Tracer Techniques</b>	<b>e03118-20</b>
<i>Oksana Coban, Olivia Rasigraf, Anniek E. E. de Jong, Oliver Spott, Brad M. Bebout</i>	
<b>EVOLUTIONARY AND GENOMIC MICROBIOLOGY</b>	
<b>Evolutionary Genomic and Bacterial Genome-Wide Association Study of <i>Mycobacterium avium</i> subsp. <i>paratuberculosis</i> and Dairy Cattle Johne's Disease Phenotypes</b>	<b>e02570-20</b>
<i>Vincent P. Richards, Annette Nigsch, Paulina Pavinski Bitar, Qi Sun, Tod Stuber, Kristina Ceres, Rebecca L. Smith, Suelee Robbe Austerman, Ynte Schukken, Yrjo T. Grohn, Michael J. Stanhope</i>	
<b>Resistance Determinants and Their Genetic Context in Enterobacteria from a Longitudinal Study of Pigs Reared under Various Husbandry Conditions</b>	<b>e02612-20</b>
<i>Dominic Poulin-Laprade, Jean-Simon Brouard, Nathalie Gagnon, Annie Turcotte, Alexandra Langlois, J. Jacques Matte, Catherine D. Carrillo, Rahat Zaheer, Tim A. McAllister, Edward Topp, Guylaine Talbot</i>	
<b>FOOD MICROBIOLOGY</b>	
<b>Influence of Incubation Temperature and Total Dissolved Solids on Biofilm and Spore Formation by Dairy Isolates of <i>Geobacillus stearothermophilus</i></b>	<b>e02311-20</b>
<i>Murali Kumar, Steve Flint, Jon Palmer, Sawatdeenaruenat Chanapha, Chris Hall</i>	
<b>INVERTEBRATE MICROBIOLOGY</b>	
<b>Localization of Bacterial Communities within Gut Compartments across <i>Cephalotes</i> Turtle Ants</b>	<b>e02803-20</b>
<i>Peter J. Flynn, Catherine L. D'Amelio, Jon G. Sanders, Jacob A. Russell, Corrie S. Moreau</i>	
<b>MICROBIAL ECOLOGY</b>	
<b>A Postbiotic Consisting of Heat-Treated Lactobacilli Has a Bifidogenic Effect in Pure Culture and in Human Fermented Fecal Communities</b>	<b>e02459-20</b>
<i>Alicja K. Warda, Adam G. Clooney, Feargal Ryan, Pedro H. de Almeida Bettio, Giulio Di Benedetto, Reynolds P. Ross, Colin Hill</i>	
<b>PLANT MICROBIOLOGY</b>	
<b>"<i>Candidatus Liberibacter asiaticus</i>" Secretes Nonclassically Secreted Proteins That Suppress Host Hypersensitive Cell Death and Induce Expression of Plant Pathogenesis-Related Proteins</b>	<b>e00019-21</b>
<i>Peixiu Du, Chao Zhang, Xiuping Zou, Zongcai Zhu, Hailin Yan, Hada Wuriyangan, Weimin Li</i>	
<b>PUBLIC AND ENVIRONMENTAL HEALTH MICROBIOLOGY</b>	
<b>Metagenomics of Antimicrobial and Heavy Metal Resistance in the Cecal Microbiome of Fattening Pigs Raised without Antibiotics</b>	<b>e02684-20</b>
<i>Paiboon Tunsagool, Wuttichai Mhuantong, Sithichoke Tangphatsornruang, Nutthee Am-In, Rungtip Chuanchuen, Taradon Luangtongkum, Gunnaporn Suriyaphol</i>	

**AUTHOR CORRECTION**

**Correction for Thompson et al., “Fatty Acid and Alcohol Metabolism in *Pseudomonas putida*: Functional Analysis Using Random Barcode Transposon Sequencing”** e00177-21

*Mitchell G. Thompson, Matthew R. Incha, Allison N. Pearson, Matthias Schmidt, William A. Sharpless, Christopher B. Eiben, Pablo Cruz-Morales, Jacquelyn M. Blake-Hedges, Yuzhong Liu, Catharine A. Adams, Robert W. Haushalter, Rohith N. Krishna, Patrick Lichtner, Lars M. Blank, Aindrila Mukhopadhyay, Adam M. Deutschbauer, Patrick M. Shih, Jay D. Keasling*