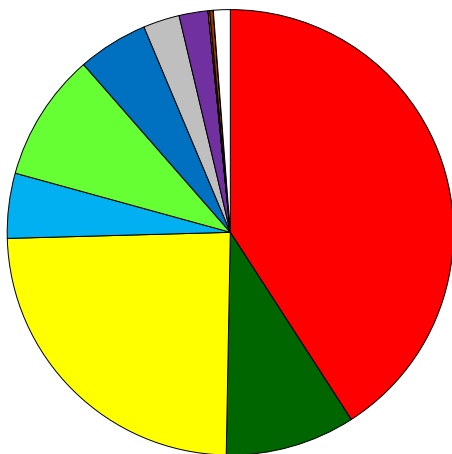


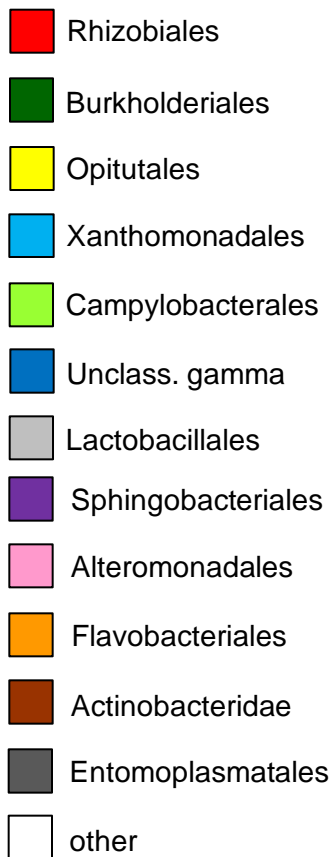
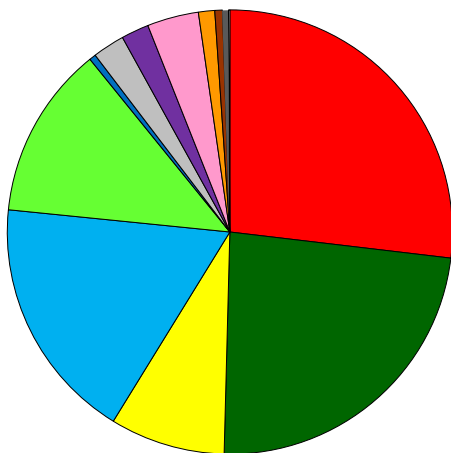
## Microbial community

## Bacterial orders

454



Cloning



**Figure S2. Overview of culture-independent approaches of bacterial diversity.** Average microbial community composition is displayed in form of pie charts giving the relative abundance of bacterial orders as observed by 454 sequencing (top pie) and cloning (bottom pie). Colony CSM1323 was excluded from these analyses due to an infection with Entomoplasmatales bacteria. Orders that accounted for less than 1% of reads were summarized in the category "other".